

HSV-3S1 | High Lift Type Safety Relief Valve

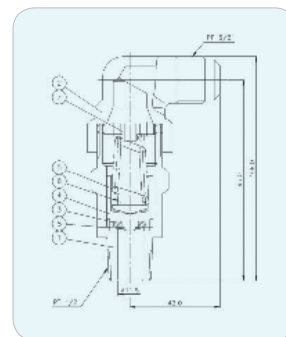
► Specifications

Type	Working Fluid	Setting Pressure (kgf/cm ²)	Working Temperature (°C)	Materials			Connection
				Body	Bonnet	Trim	
No Lever	Gas	0.5~33	100	Forged Brass	Forged Brass	Stainless Steel	PT Screwed



► Dimensions

Size	Part	d	ds	L	H1	H	Lift	Inlet	Outlet
15A		11.5	11.5	42	95	106	1.0	PT 1/2"	PF 5/8"



VSV-1S | Vacuum Breaker

► Specifications

Type	Setting Pressure (kgf/cm ²)	Working Temperature (°C)	Materials		Connection
			Body	Trim	
Steam	—	220	Brass	Stainless Steel	PT Screwed



► Dimensions

Size	Part	d	L	H	Inlet
15A		PT 1/2"	35	55	PT Screwed
20A		PT 3/4"	35	55	

