



## Datasheet for three-phase Squirrel-Cage-Motors

**Order Number: 1LE0102-0DA32-1AA4**

Client-order-no.:

Order-no.:

Offer-no.:

Remarks:

Item-no.:

Consignment-no.:

Project:

### Electrical data

Rated motor voltage:	220VD / 380VY
Frequency:	50 Hz
Rated motor power:	1.1 kW
Rated motor speed:	2830 1/min
Maximum Speed:	5200 1/min
Number of poles:	2
No load current:	1.22 A
Rated current:	2.6 A
Starting current:	6
Rated motor torque:	3.7 Nm
Torque class:	E
Starting torque:	2.6
Breakdown torque:	3.1
Efficiency class:	IE 1
Efficiency 100% Load:	75%
Efficiency 75% Load:	77.3%
Efficiency 50% Load:	74.4%
Power factor 100% Load:	0.86
Motor protection:	without
Terminal box position:	terminal box on top

### Mechanical data

Noise (Lpfa):	53.00 dB(A)
Moment of inertia:	0.001 kg m <sup>2</sup>
Cantilever force for x0:	620 N
Cantilever force for xmax:	510 N
Bearing drive end:	6204 2Z C3
Bearing non-drive end (hor.mount.):	6204 2Z C3
Bearing non-drive end (vert.mount.):	6204 2Z C3
Drain holes:	no
Regreasing device:	no
Relubrication interval at 40°C:	
Coating:	RAL 7030 stone gray

### Site conditions

Ambient temperature	-20.0°C to +40°C
Altitude above sea level:	1000m
Standards and specifications:	IEC

### General data

Frame size:	80M
Type of construction:	IMB3
Weight in kg (net):	17.5 kg
Frame material	Cast iron
Fan cover material:	metal
Degree of protection:	IP 55
Method of cooling:	Self-ventilated (IC 411)
Vibration class:	A (standard)
Insulation:	155(F) / 130(B)
Duty type:	S1 = cont. operation
Direction of rotation:	bidirectional

### Terminal box

Material of terminal box	Cast iron
Terminal screw thread:	M4
Max. cable cross-sectional area:	1.5 mm <sup>2</sup>
Cable diameter from ... to ...:	13 - 18 mm
Cable entry:	M25 x 1.5 + M16 x 1.5
Cable gland:	no

### Explosion protection

Type of protection:	without (standard)
---------------------	--------------------

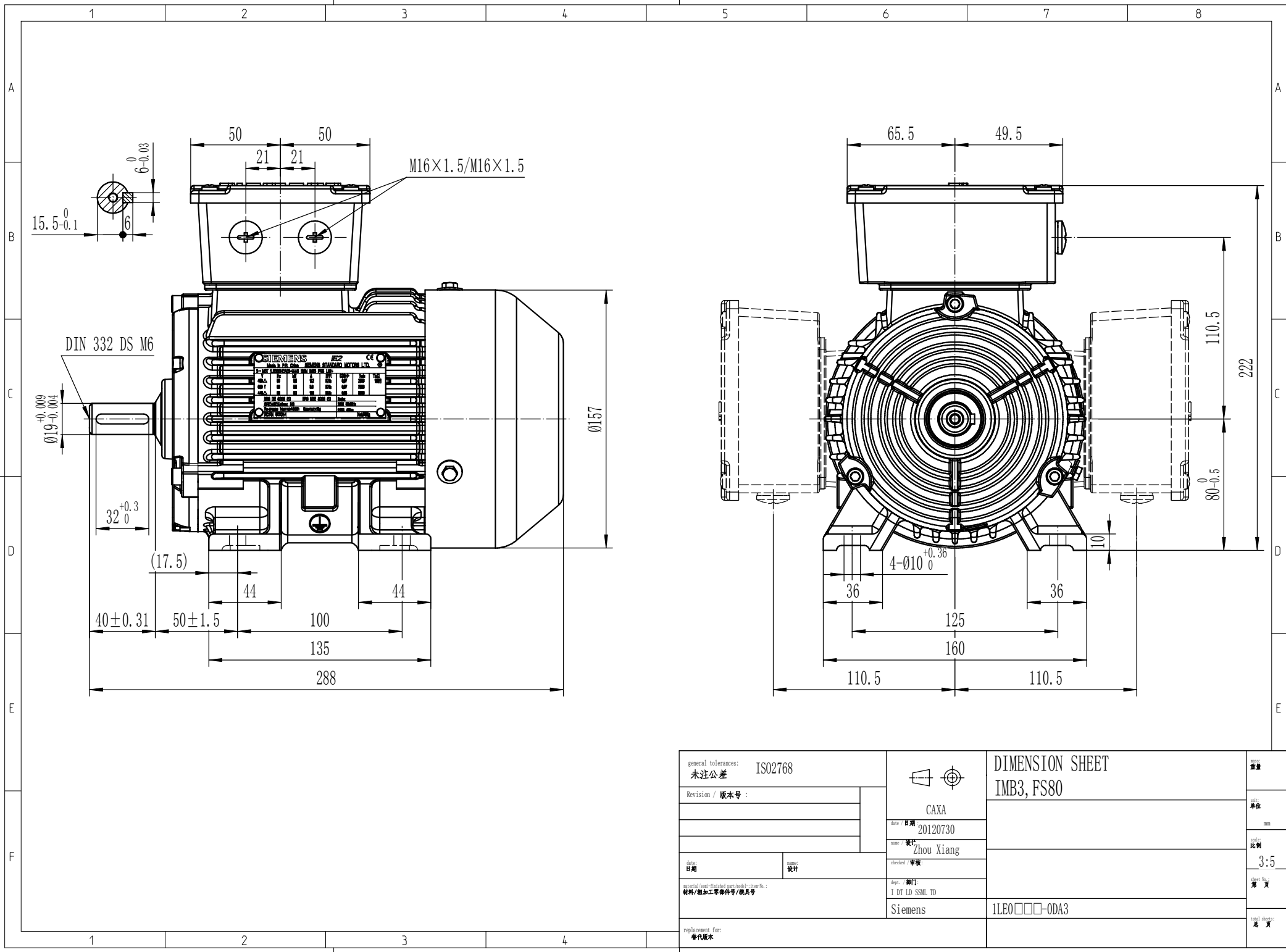
### Special configurations

Technical and ordering data are subject to change. There may be discrepancies between calculated and rating plate values.

Printed on 2013-10-17

本图档包含西门子工业集团或其子公司所拥有的所有权利。未经书面许可，任何人不得复制或传播本图档的任何部分。

The reproduction, transmission or use of this document or its content is prohibited without the written permission of Siemens AG. All rights including rights created by patent or registration of a utility model or design, are reserved.



general tolerances: ISO2768 未注公差		CAXA date 日期: 20120730 name 设计: Zhou Xiang	DIMENSION SHEET IMB3, FS80		重量
Revision / 版本号:			1 DT LD SSML TD Siemens		单位 mm 比例 3:5 页次 第 1 页 总页 总 页
date 日期:	name 设计:	checked / 审核:		replacement for: 替代版本	
material/semi-finished part model/item No.: 材料/加工零部件号/模具号		dept. 部门:		1LE0□□□-ODA3	