









## Mass flow controller (MFC)/mass flow meter (MFM) for gases

- Nominal flow range from 20 IN/min to 2500 IN/min (re. nitrogen)
- High accuracy in measurement and repeat accuracy
- Electromagnetic and motor-driven valve actuator available
- Easy device exchange due to configuration memory
- Optional: ATEX II Cat. 3G/D or USP Class VI, FDA, EC 1935 conformity

Product variants described in the data sheet may differ from the product presentation and description.

### Can be combined with

	<b>Type 6013</b> Plunger valve 2/2-way direct-acting	►
	<b>Type 0330</b> Direct-acting 2/2 or 3/2-way pivoted armature valve	►
	<b>Type ME43</b> Fieldbus gateway	►
	<b>Type ME63</b> Industrial Ethernet gateway, IP65/IP67/IP69k	►
	<b>Type ME61</b> EDIP process display	►
	<b>Type ME66</b> Passive junction box, IP65/IP67/ IP69k	►

### Type description

The mass flow controller (MFC)/mass flow meter (MFM) Type 8746 for gases is suitable for a wide range of applications, e.g. metal and glass manufacturing or processing, fermentation processes, test benches or filling systems and packaging machines. Type 8746 is available in two variants: a variant with several analogue or digital communication interfaces and a variant with a pure CANopen-based interface. The latter is suitable for integration into existing CANopen networks or - in combination with a Bürkert fieldbus gateway - for integration in all common industry standards for Industrial Ethernet or fieldbus. This variant is tailor-made for applications with many control loops. Up to 32 MFCs / MFMs can be connected to one fieldbus gateway. The gateway transmits the internal CANopen-based communication to Industrial Ethernet and fieldbus standards. The mass flow controller / mass flow meter can always be switched between bus and CANopen communication. Type 8746 can be configured as an MFM or an MFC according to demand. Optionally, up to four calibration curves can be stored in the device. The thermal inline sensor is located directly in the main flow and achieves fast response times and a high level of measuring accuracy with long-term stable calibration. As the actuator, a Bürkert direct-acting, electromagnetic proportional valve or motor valve guarantees high response sensitivity. The integrated PI controller ensures excellent control characteristics of the MFC. Type 8746 is characterised by a low pressure drop, even at high flow rates, and is especially designed for use in harsh environments thanks to its high IP degree of protection and explosion protection.

## Table of contents

<b>1. General technical data</b>	<b>4</b>
1.1. General .....	4
1.2. Variant with electromagnetic proportional valve .....	5
1.3. Variant with electromotive proportional valve .....	5
<b>2. Approvals and conformities</b>	<b>6</b>
2.1. General notes .....	6
2.2. Conformity .....	6
2.3. Standards .....	6
2.4. Explosion protection .....	6
2.5. North America (USA/Canada) .....	7
2.6. Foods and beverages/Hygiene .....	7
2.7. Oxygen .....	7
<b>3. Materials</b>	<b>7</b>
3.1. Bürkert resistApp .....	7
<b>4. Dimensions</b>	<b>8</b>
4.1. Threaded variant connections .....	8
Small nominal flow rates, with internal thread .....	8
Small nominal flow rates, with clamp connection DN 20...¾" .....	8
Large nominal flow rates, with internal thread .....	8
Large nominal flow rates, with clamp connection DN 40...1½" .....	9
4.2. Variant with electromagnetic proportional valve and bus/CANopen interface .....	10
MFC with valve Type 2873 .....	10
MFC with valve Type 2875 .....	11
MFC with valve Type 2836 .....	12
4.3. Variant with electromotive proportional valve and bus/CANopen interface .....	15
MFC with valve Type 3280 .....	15
MFC with valve Type 3285 (DN 12 and DN 15) .....	16
MFC with valve Type 3285 (DN 20 and DN 25) .....	17
4.4. MFM variant with bus/CANopen interface .....	18
Variant with base block 00 or A1 for small nominal flow rates .....	18
Variant with base block A2 for large nominal flow rates .....	19
Variant with base block A3 for very large nominal flow rates .....	19
4.5. Variant with electromagnetic proportional valve and analogue interface or PROFIBUS DPV1 interface .....	20
MFC with valve Type 2873 .....	20
MFC with valve Type 2875 .....	21
MFC with valve Type 2836 .....	22
4.6. Variant with electromotive proportional valve and analogue interface or PROFIBUS DPV1 interface .....	25
MFC with valve Type 3280 .....	25
MFC with valve Type 3285 (DN 12 and DN 15) .....	27
MFC with valve Type 3285 (DN 20 and DN 25) .....	28
4.7. MFM variant with analogue interface or PROFIBUS DPV1 interface .....	29
Variant with base block 00 or A1 for small nominal flow rates .....	29
Variant with base block A2 for large nominal flow rates .....	30
Variant with base block A3 for very large nominal flow rates .....	30
4.8. Variant with Industrial Ethernet interface .....	31
<b>5. Product connections</b>	<b>32</b>
5.1. Communication .....	32
bus/CANopen .....	32
Industrial Ethernet .....	32
Analogue .....	32

PROFIBUS DPV1.....	33
<b>6. Performance specifications</b>	<b>34</b>
6.1. MFM pressure loss diagram .....	34
6.2. Nominal flow rate of typical gases .....	34
6.3. Derating diagram for electromotive variants .....	35
<b>7. Product operation</b>	<b>35</b>
7.1. Measurement principle .....	35
<b>8. Product design and assembly</b>	<b>36</b>
8.1. Measures to comply with ATEX requirements.....	36
<b>9. Product accessories</b>	<b>37</b>
9.1. Bürkert Communicator software .....	37
9.2. Connecting Type 8746 with the Bürkert Communicator software.....	38
9.3. Configuration management for easy device replacement.....	38
9.4. Web server for Industrial Ethernet variant .....	38
<b>10. Ordering information</b>	<b>38</b>
10.1. Bürkert eShop .....	38
10.2. Recommendation regarding product selection.....	38
10.3. Bürkert product filter .....	39
10.4. Bürkert Product Enquiry Form .....	39
10.5. Ordering chart accessories.....	39

## 1. General technical data

### 1.1. General

Product properties	
Dimensions	Further information can be found in chapter <a href="#">“4. Dimensions” on page 8.</a>
<b>Material</b>	
Seal	FKM or EPDM (depending on gas) <sup>1)</sup>
Housing	Die-cast aluminium (painted)
Base block	Aluminium or stainless steel 1.4404/316L
Wetted parts (sensor)	Stainless steel 1.4404/316L, Al <sub>2</sub> O <sub>3</sub> , PPS GF40, epoxy resin, silicon, silicon nitride
Configuration management	Further information can be found in chapter <a href="#">“9.3. Configuration management for easy device replacement” on page 38.</a>
Electrical data	
Operating voltage	24 V DC
Residual ripple	± 2 %
Voltage tolerance	± 10 %
<b>Electrical connection</b>	
büS/CANopen variant	M12 plug, 5-pin
Analogue variant	M12 plug, 5-pin, M12 socket, 5-pin
Industrial Ethernet variant	M12 plug, 5-pin, 2 x M8 socket, 4-pin
PROFIBUS DPV1 variant	M12 plug, 5-pin, M12 socket, 5-pin
Medium data	
Operating medium	Neutral, pure gases (others on request) Further information can be found in chapter <a href="#">“6.2. Nominal flow rate of typical gases” on page 34.</a>
Calibration medium	Operating medium or air
Medium temperature	- 10 °C <sup>2)</sup> ... + 70 °C (- 10 °C <sup>2)</sup> ... + 60 °C with oxygen)
Product connections	
Analogue interface	4...20 mA, 0...20 mA, 0...10 V or 0...5 V Input impedance: > 20 kΩ (voltage) resp. < 300 Ω (current) Maximum current: 10 mA (voltage output) Maximum load: 400 Ω (current output)
Digital communication interface	büS/CANopen, PROFIBUS DPV1, Industrial Ethernet: EtherCAT®, EtherNet/IP, Modbus TCP
Port connection	G ¼ or NPT ¼, ⅜, ½, ¾, 1, surface mounting, clamp connection
Approvals and conformities	
Certificate	Material certificate 3.1 (optionally)
Explosion protection	Further information can be found in chapter <a href="#">“2.4. Explosion protection” on page 6.</a>
North America (USA/Canada)	Further information can be found in chapter <a href="#">“2.5. North America (USA/Canada)” on page 7.</a>
Foods and Beverages/Hygiene	Further information can be found in chapter <a href="#">“2.6. Foods and beverages/Hygiene” on page 7.</a>
Oxygen	Further information can be found in chapter <a href="#">“2.7. Oxygen” on page 7.</a>
Environment and installation	
Installation position	Horizontal or vertical
Storage temperature	- 10 °C ... + 70 °C
Relative air humidity	Max. 95 % at + 55 °C, non-condensing
Degree of protection	IP65
Ambient temperature	- 10 °C ... + 50 °C (higher temperatures on request)
Accessories	
Software	Bürkert Communicator Further information can be found in chapter <a href="#">“9.1. Bürkert Communicator software” on page 37.</a>

1.) When using the electromotive proportional valve, the device additionally includes:

- Type 3280 DN 4: PEEK valve seat seal
- Type 3285: Al<sub>2</sub>O<sub>3</sub> valve seat seal

2.) When using the electromotive proportional valve, the minimum medium temperature is 0 °C.

## 1.2. Variant with electromagnetic proportional valve

Type 8746 can be configured as MFC or MFM as required. The MFC variant uses direct-acting proportional valves of the 287x series. These electromagnetic proportional valves are normally closed and stand for highest measuring accuracy and repeatability with settling times resp. response times of a few hundred milliseconds.

Product properties	
Dimensions	Further information can be found in chapter <b>"4. Dimensions"</b> on page 8.
Total weight	Approx. 1800 g (aluminium, 16 W valve) Approx. 3100 g (stainless steel, 16 W valve)
LED display <sup>1.)</sup>	RGB LED according to NAMUR NE107
Actuator (proportional valve)	
Valve position	Normally closed
Nominal diameter	0.8...12 mm
K <sub>VS</sub> value range	0.02...2.5 m³/h
Performance data	
Nominal flow range (Q <sub>N</sub> ) <sup>2.)</sup>	MFC: 20...1500 l <sub>N</sub> /min (N <sub>2</sub> ) <sup>2.)</sup> MFM: ≤ 2500 l <sub>N</sub> /min (N <sub>2</sub> ) <sup>2.)</sup>
Operating pressure <sup>3.)</sup>	MFM: max. 25 bar MFC: max. 25 bar (the maximum operating pressure depends on medium and nominal valve size)
Measuring accuracy <sup>4.)</sup>	± 1.5 % MV <sup>4.)</sup> ± 0.3 % FS <sup>4.)</sup> (under calibration conditions and after < 1 min warm-up time to achieve the best measuring conditions)
Repeatability	± 0.1 % FS
Turndown ratio	1:50
Settling time (MFC)/Response time (MFM) (t <sub>95</sub> )	< 500 ms
Electrical data	
Power consumption <sup>7.)</sup>	MFM: max. 2 W MFC: max. 10.5...29.5 W (depending on the proportional valve type)

1.) For a detailed description of LED colours see **operating instructions Type 8746** ►.

2.) Index N: flow rates with respect to 1.013 bar abs and 0 °C

3.) Overpressure to atmospheric pressure

4.) If the operating medium differs from the calibration medium, the actual measuring accuracy may deviate from the specified value. If natural gas is used as the operating medium, the measuring accuracy depends on the composition of the natural gas, which can vary depending on origin and season.

5.) Of measured value

6.) Of full scale

7.) Information based on the typical power consumption (at + 23 °C ambient temperature, nominal flow rate and 30 min closed-loop control mode). The specifications according to UL 61010 - 1 may deviate (see **operating instructions Type 8746** ►).

## 1.3. Variant with electromotive proportional valve

Type 8746 with electromotive proportional valve is especially suitable for applications with high inlet pressures up to 22 bar or high flow rates (with low pressure loss). Thanks to their very low holding power, these valves can drastically reduce a system's energy consumption. When de-energised, the motor valves remain in position. The maximum duty cycle of the motor depends on the ambient temperature. The duty cycle does not refer to the duty cycle of the appliance but the duty cycle of the motor. The motor is only switched on when the valve is to move. The motor's duty cycle increases drastically due to frequent changes in the set-point value. Further information about the derating curve can be found in chapter **"6.3. Derating diagram for electromotive variants"** on page 35.

Product properties	
Dimensions	Further information can be found in chapter <b>"4. Dimensions"</b> on page 8.
Total weight	Approx. 1670 g (aluminium, valve Type 3280) Approx. 2940 g (stainless steel 1.4404/316L, valve Type 3280)
LED display <sup>1.)</sup>	With MFM: RGB LED according to NAMUR NE107 With valve: RGB LED to indicate valve opening
Actuator (proportional valve)	
Nominal diameter	2...20 mm
K <sub>VS</sub> value range	0.5...7.8 m³/h
Performance data	
Nominal flow range (Q <sub>N</sub> ) <sup>2.)</sup>	20...2500 l <sub>N</sub> /min (N <sub>2</sub> ) <sup>2.)</sup>

Operating pressure <sup>3.)</sup>	MFM: max. 25 bar MFC: max. 25 bar (the maximum operating pressure depends on medium and nominal valve size)
Measuring accuracy <sup>4.)</sup>	$\pm 2\% \text{ MV}^{5.)} \pm 0.5\% \text{ FS}^{6.)}$ (under calibration conditions and after < 1 min warm-up time to achieve the best measuring conditions)
Repeatability	$\pm 0.5\% \text{ FS}$
Turndown ratio	1:50
Settling time (MFC)/Response time (MFM) (t95)	< 5 s
<b>Electrical data</b>	
Power consumption <sup>7.)</sup>	MFM: max. 2 W MFC: max. 10.5 W

1.) For a detailed description of LED colours see **operating instructions Type 8746** ►.

2.) Index N: flow rates with respect to 1.013 bar abs and 0 °C

3.) Overpressure to atmospheric pressure

4.) If the operating medium differs from the calibration medium, the actual measuring accuracy may deviate from the specified value. If natural gas is used as the operating medium, the measuring accuracy depends on the composition of the natural gas, which can vary depending on origin and season.

5.) Of measured value

6.) Of full scale

7.) Data during the movement of the electromotive proportional valve. Valve holding power is < 1 W.

## 2. Approvals and conformities

### 2.1. General notes

- The approvals and conformities listed below must be stated when making enquiries. This is the only way to ensure that the product complies with all required specifications.
- Not all available variants can be supplied with the below mentioned approvals or conformities.



### 2.2. Conformity

In accordance with the Declaration of Conformity, the product is compliant with the EU Directives.


### 2.3. Standards

The applied standards which are used to demonstrate compliance with the EU Directives are listed in the EU-Type Examination Certificate and/or the EU Declaration of Conformity.


### 2.4. Explosion protection

Approval	Description
 	<b>Optional: Explosion protection</b> <b>ATEX:</b> <b>EPS 22 ATEX 1 277 X</b> II 3G Ex ec IIC T4 Gc II 3D Ex tc IIIC T135 °C Dc <b>IECEx:</b> <b>IECEx EPS 22.0066X</b> Ex ec IIC T4 Gc Ex tc IIIC T135 °C Dc


## 2.5. North America (USA/Canada)

Approval	Description
	<b>Optional: UL Listed for the USA and Canada</b> The products are UL Listed for the USA and Canada according to: <ul style="list-style-type: none"> <li>• UL 61010-1 (ELECTRICAL EQUIPMENT FOR MEASUREMENT, CONTROL, AND LABORATORY USE – Part 1: General Requirements)</li> <li>• CAN/CSA-C22.2 No. 61010-1</li> </ul>

## 2.6. Foods and beverages/Hygiene

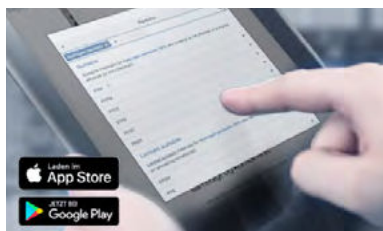
Conformity	Description
FDA	<b>FDA – Code of Federal Regulations (valid for variable code PL02, PL03)</b> All wetted materials are compliant with the Code of Federal Regulations published by the FDA (Food and Drug Administration, USA) according to the manufacturer's declaration.
USP	<b>United States Pharmacopeial Convention (USP) (valid for variable code PL04)</b> All wetted materials are biocompatible according to the manufacturer's declaration.
	<b>EC Regulation 1935/2004 of the European Parliament and of the Council (valid for variable code PL01, PL02)</b> All wetted materials are compliant with EC Regulation 1935/2004/EC according to the manufacturer's declaration.

## 2.7. Oxygen

Conformity	Description
	<b>Optional: Suitability for oxygen (valid for the variable code NL02)</b> The products are suitable for use with gaseous oxygen, according to the manufacturer's declaration.

## 3. Materials

### 3.1. Bürkert resistApp



#### Bürkert resistApp – Chemical Resistance Chart

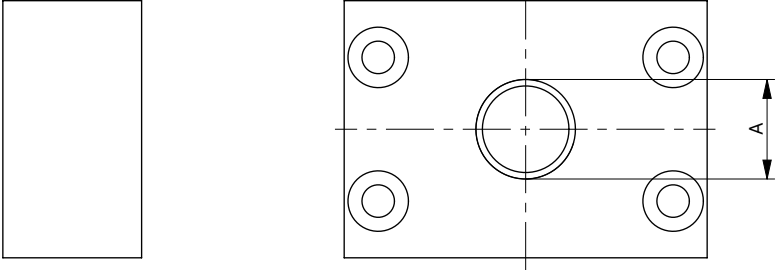
You want to ensure the reliability and durability of the materials in your individual application case? Verify your combination of media and materials on our website or in our resistApp.

[Start chemical resistance check](#)

4. Dimensions

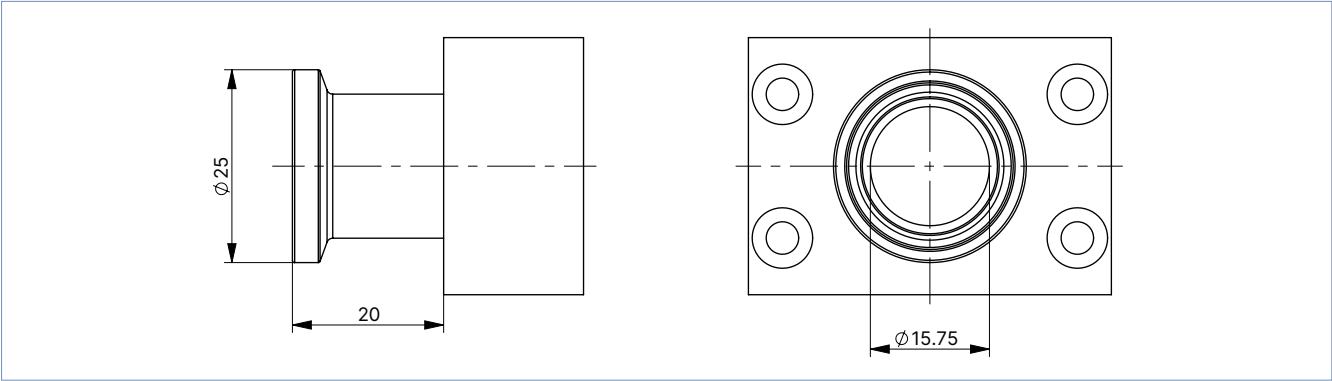
4.1. Threaded variant connections

Small nominal flow rates, with internal thread

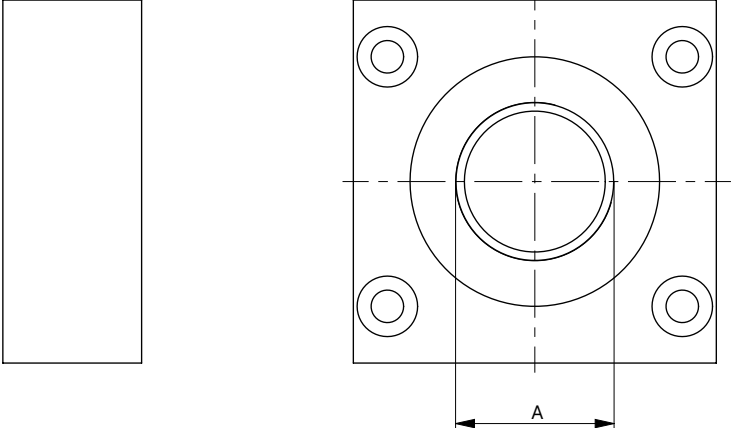
Dimensions	Thread (A)	Thread depth [mm]
	G 1/4	12
	NPT 1/4	11
	G 3/8	12
	NPT 3/8	11
	G 1/2	15
	NPT 1/2	14
	G 3/4	16
	NPT 3/4	15

Small nominal flow rates, with clamp connection DN 20...3/4"

**Note:**  
Dimensions in mm



Large nominal flow rates, with internal thread

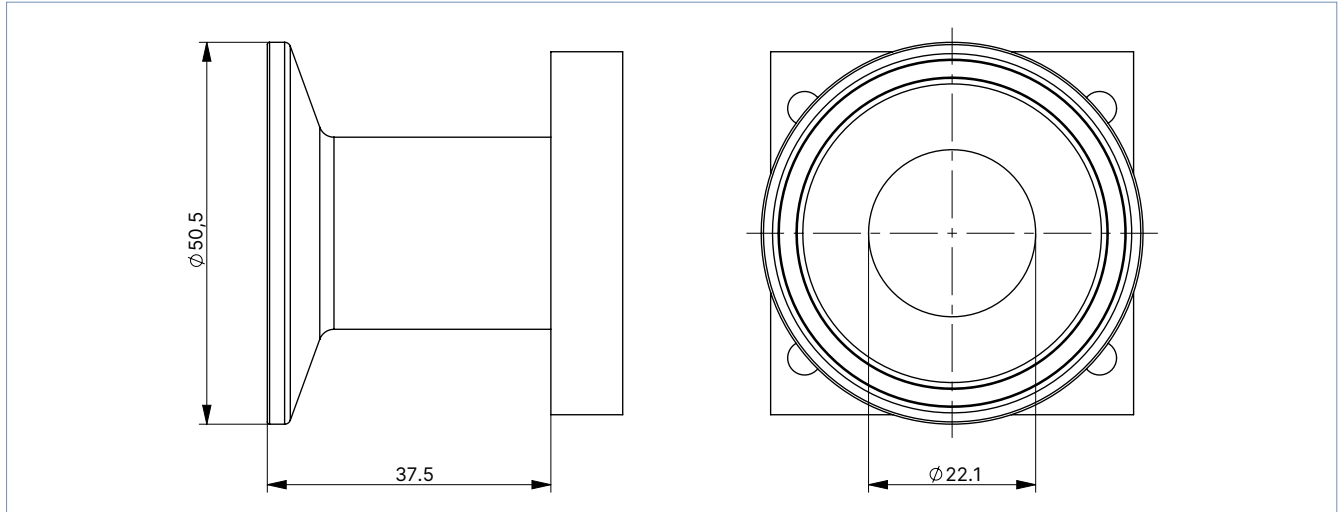
Dimensions	Thread (A)	Thread depth [mm]
	G 1/2	15
	NPT 1/2	14
	G 3/4	16
	NPT 3/4	15
	G 1	18
	NPT 1	16.8



Large nominal flow rates, with clamp connection DN 40...1½"

**Note:**

Dimensions in mm



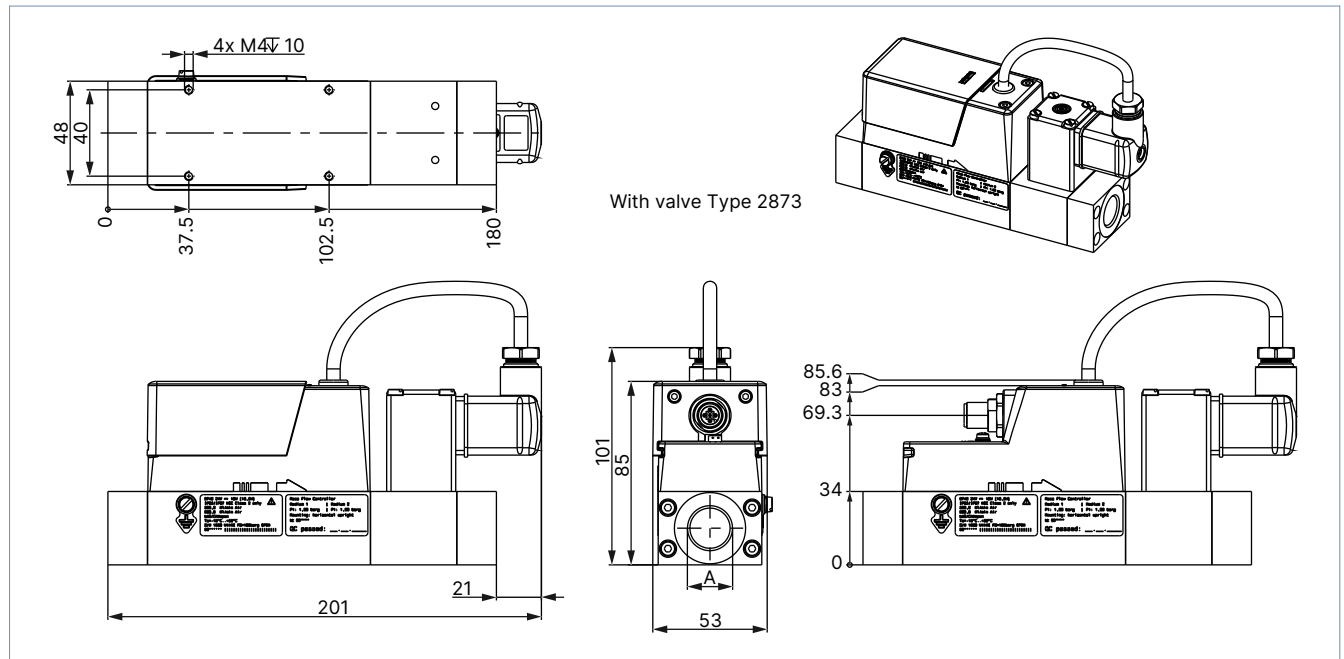
#### 4.2. Variant with electromagnetic proportional valve and bus/CANopen interface

MFC with valve Type 2873

Variant with base block 00 or A1 for small nominal flow rates

**Note:**

Dimensions in mm

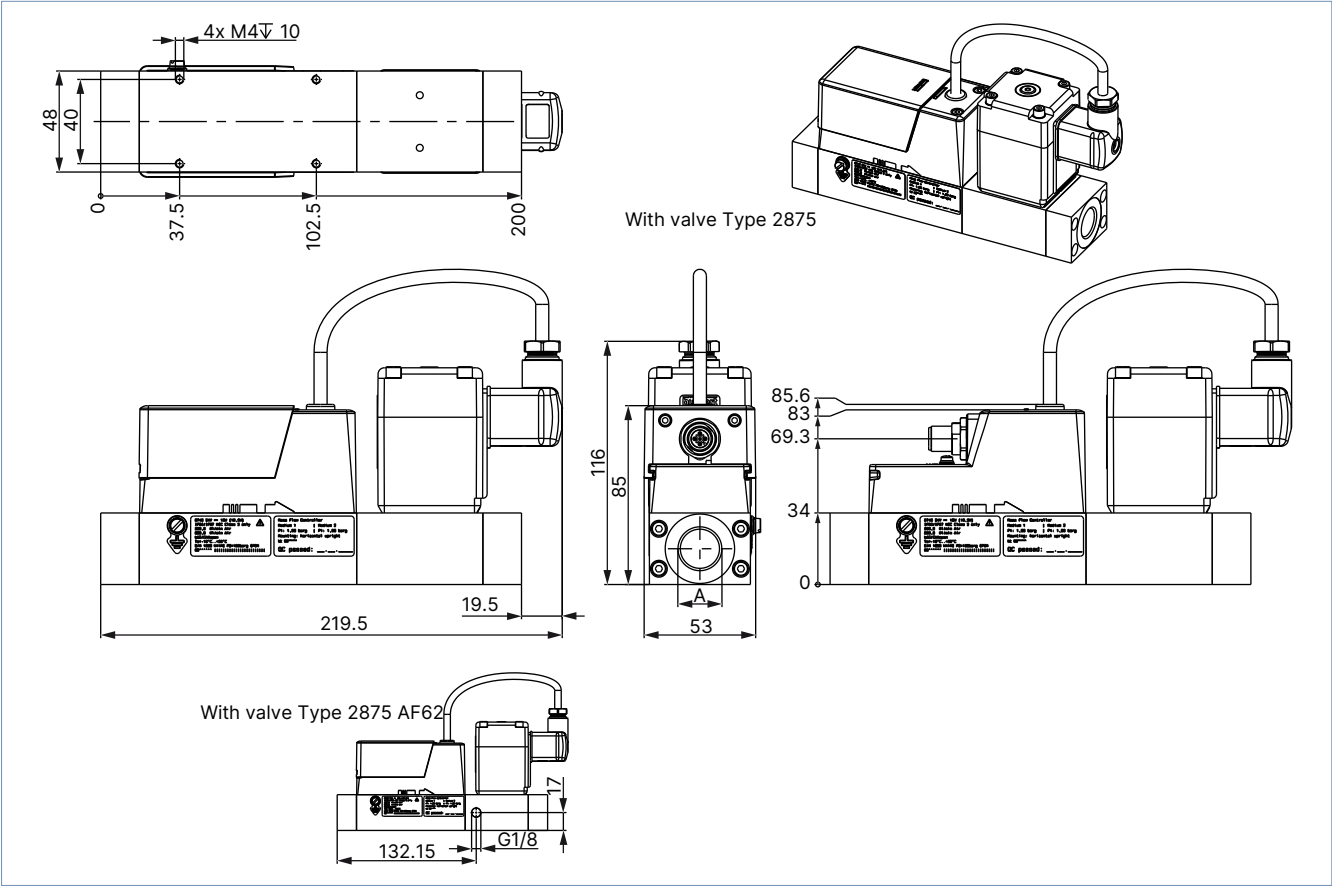


MFC with valve Type 2875

Variant with base block 00 or A1 for small nominal flow rates

**Note:**

Dimensions in mm

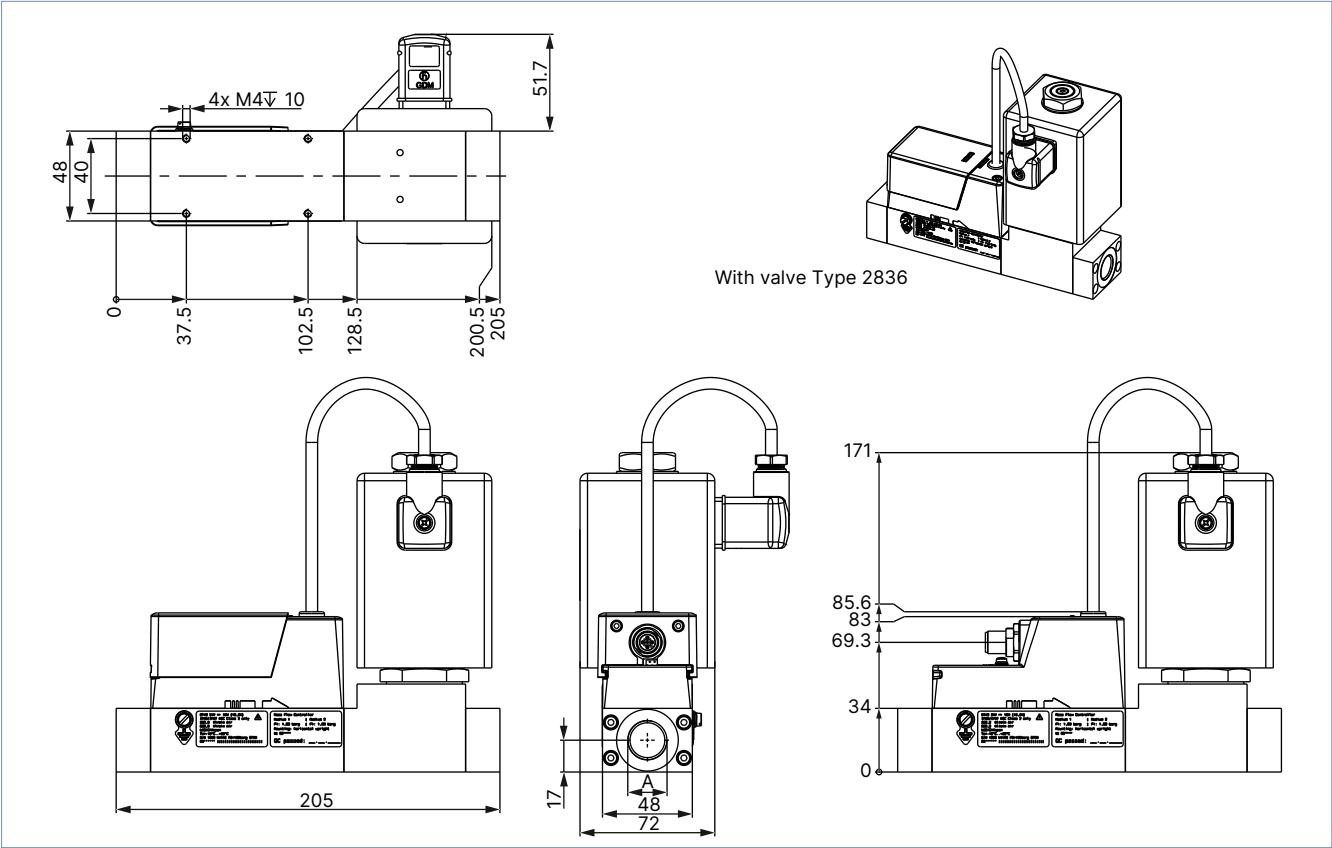


MFC with valve Type 2836

Variant with base block 00 or A1 for small nominal flow rates

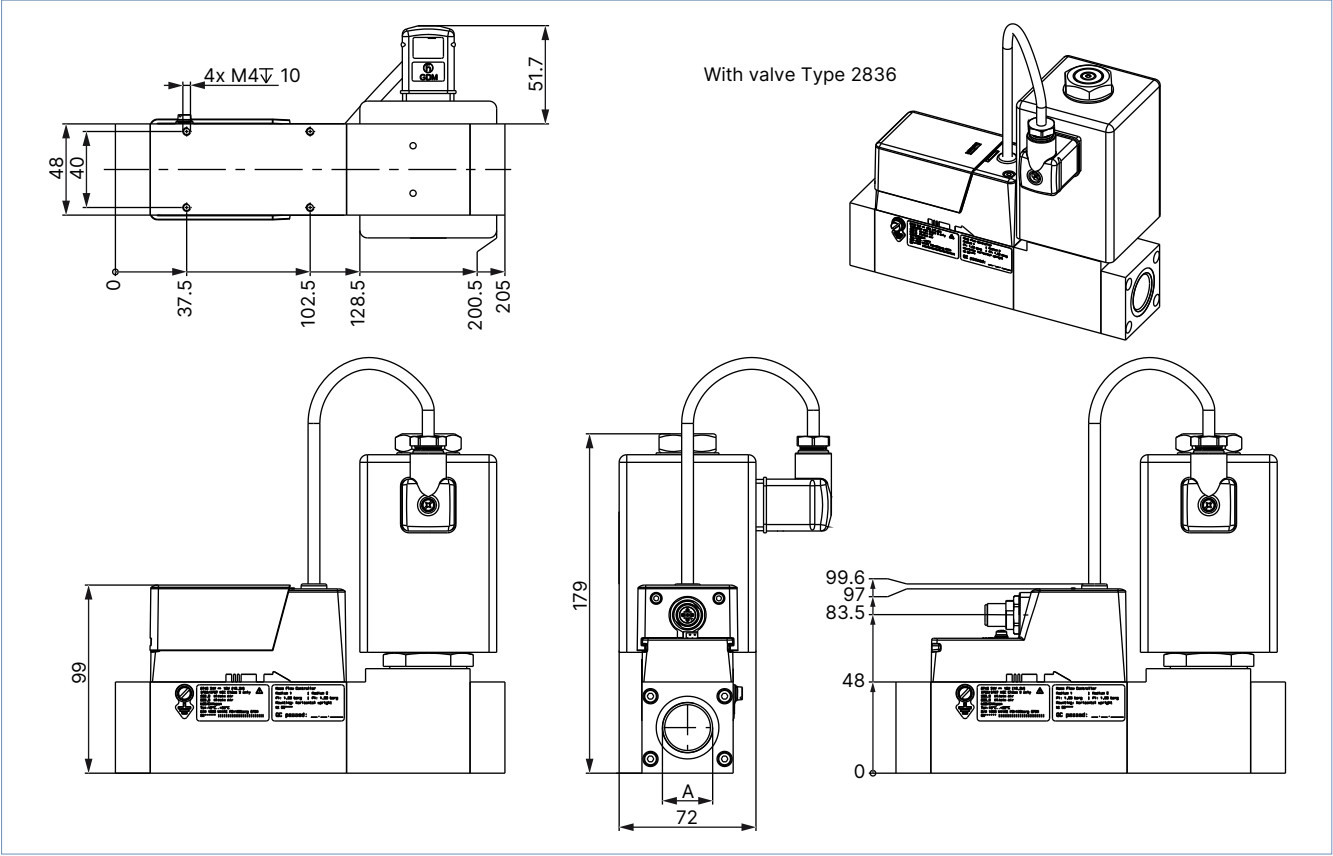
**Note:**

Dimensions in mm



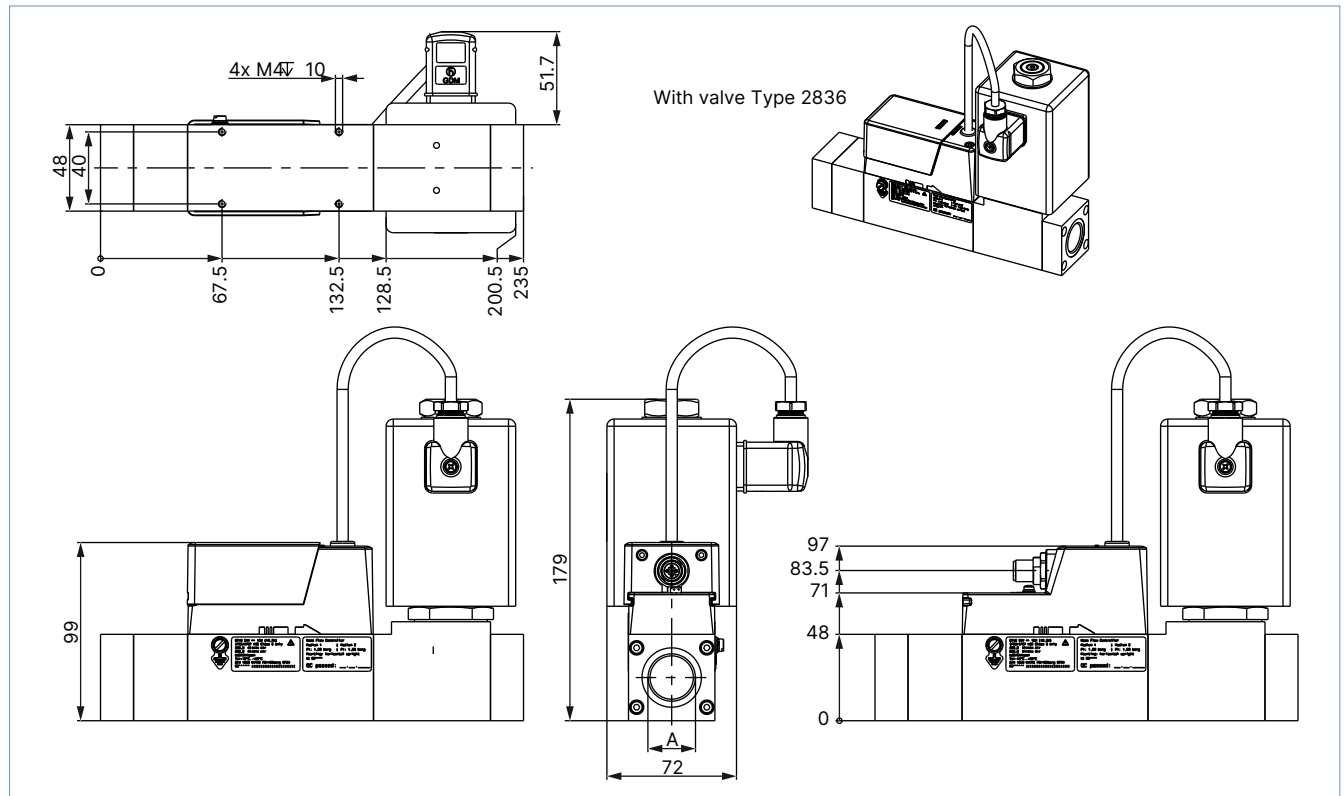
Variant with base block A2 for large nominal flow rates

**Note:**  
Dimensions in mm



**Variant with base block A3 for very large nominal flow rates**
**Note:**

- From a nominal flow rate  $Q_N > 1500$  l/min onwards, the overall length increases by 30 mm.
- Dimensions in mm



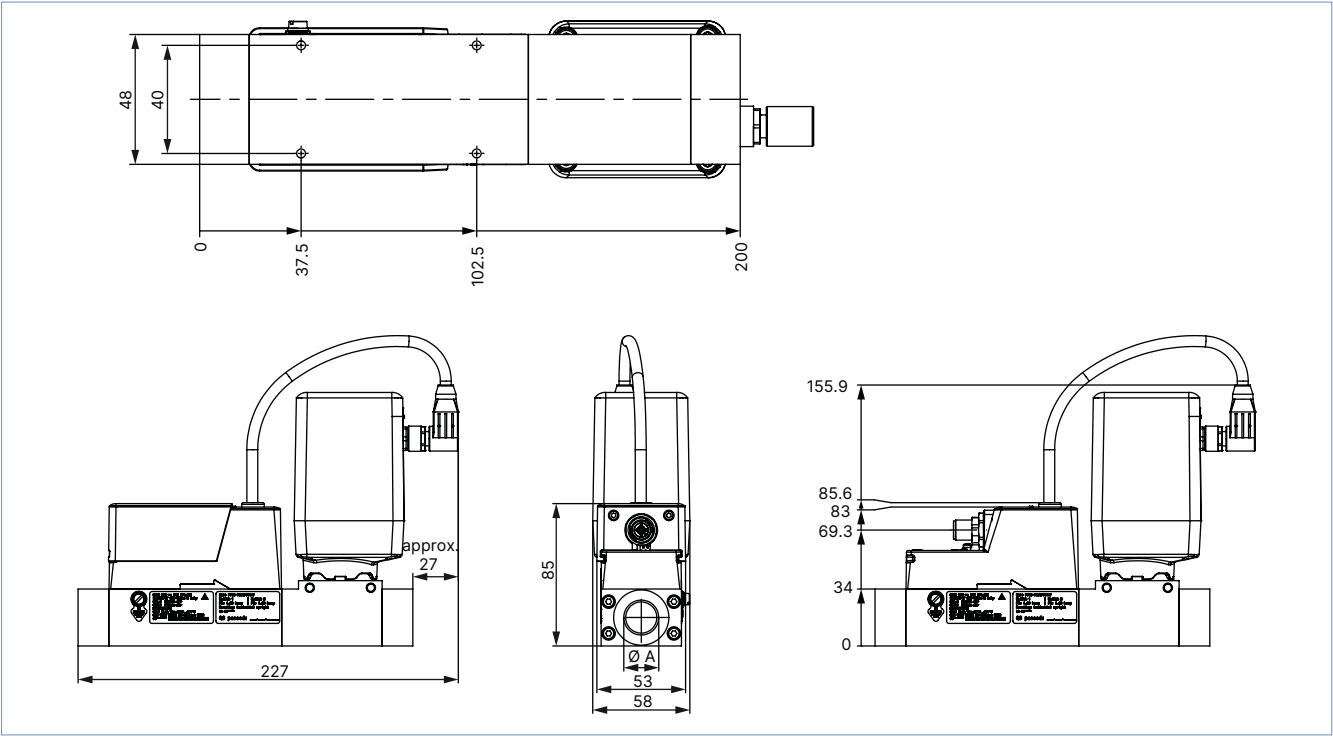
4.3. Variant with electromotive proportional valve and büS/CANopen interface

MFC with valve Type 3280

Variant with base block 00 or A1 for small nominal flow rates

**Note:**

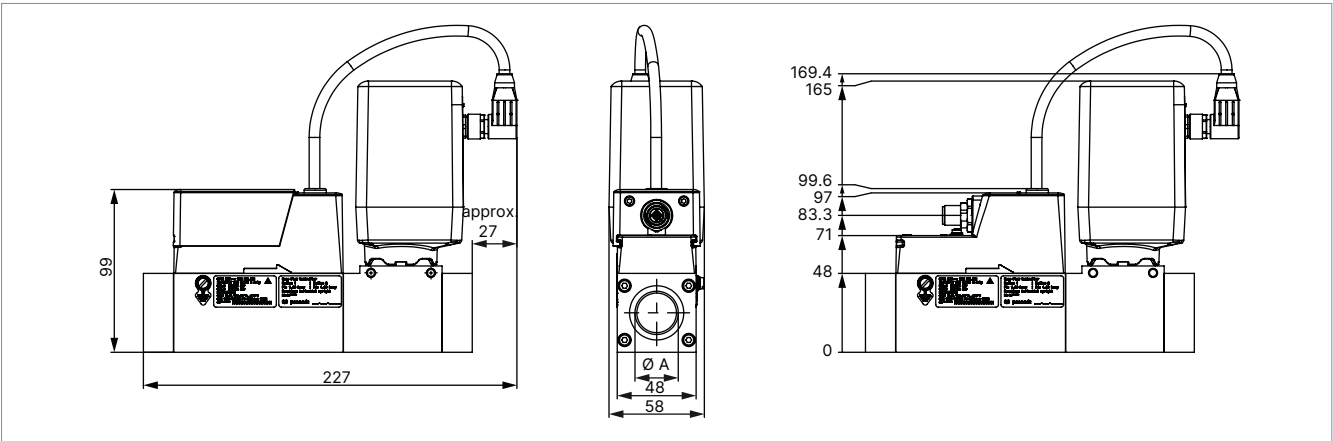
Dimensions in mm



Variant with base block A2 for large nominal flow rates

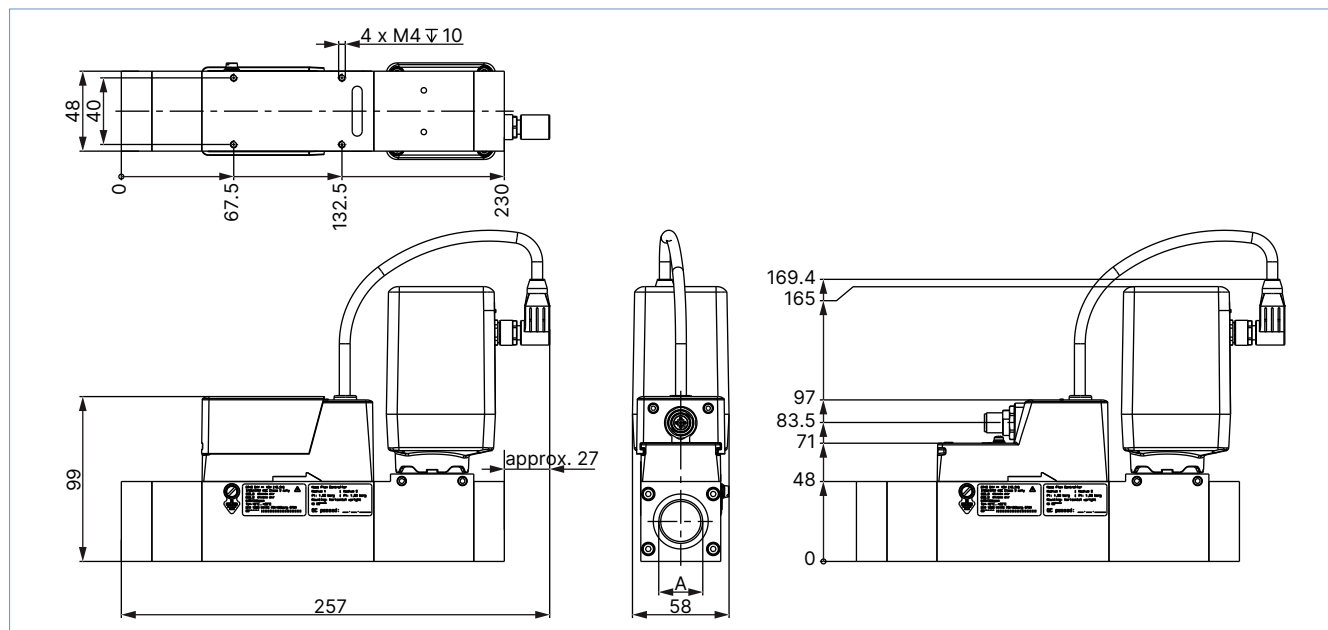
**Note:**

Dimensions in mm

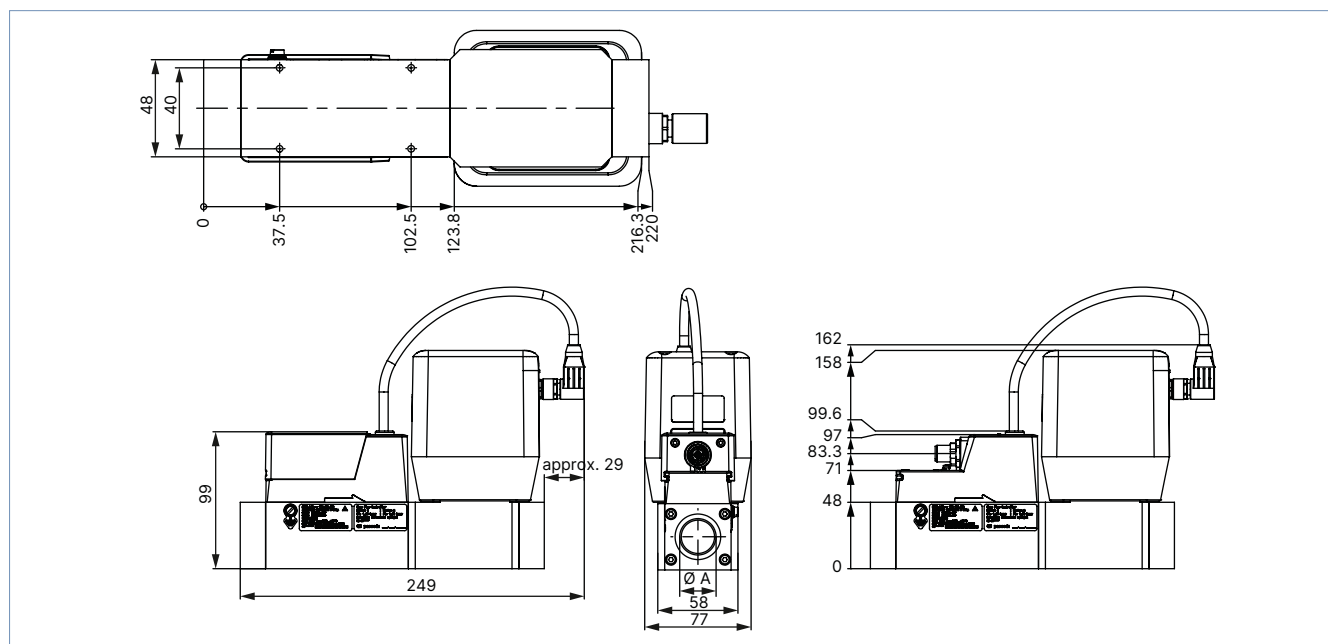


**Variant with base block A3 for very large nominal flow rates**
**Note:**

- From a nominal flow rate  $Q_N > 1500$  l/min onwards, the overall length increases by 30 mm.
- Dimensions in mm


**MFC with valve Type 3285 (DN 12 and DN 15)**
**Variant with base block A2 for large nominal flow rates**
**Note:**

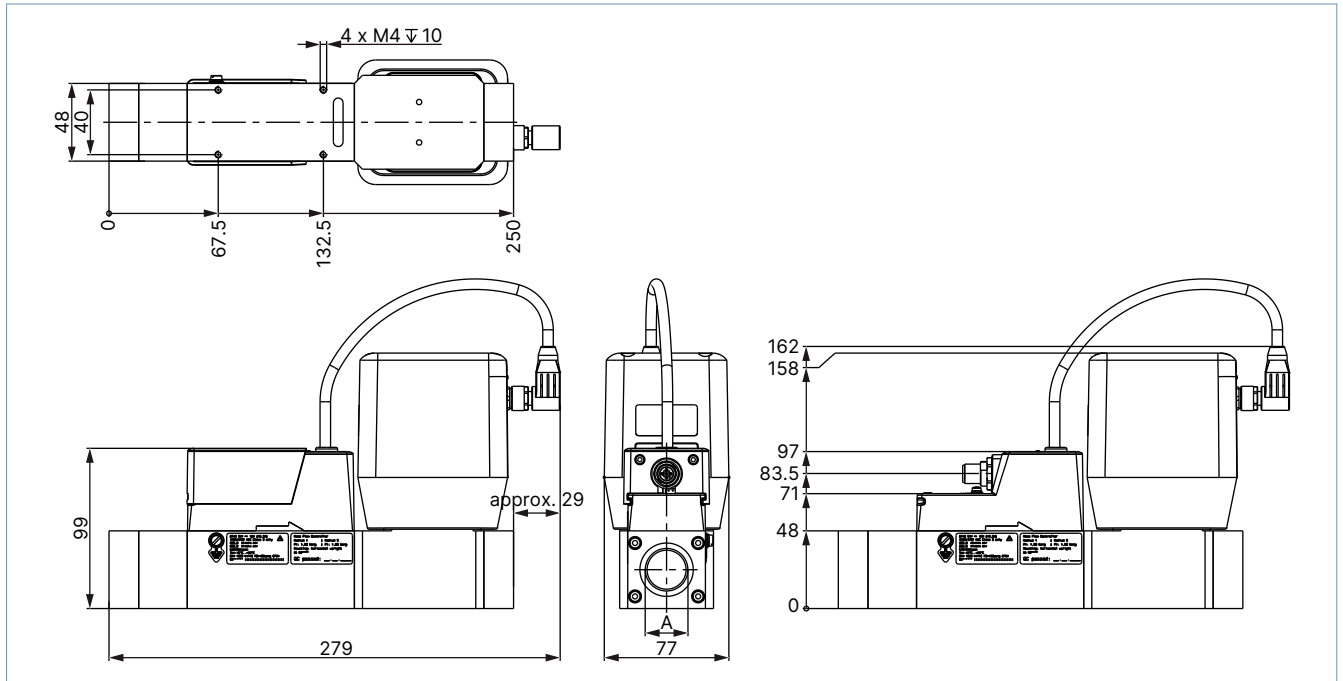
Dimensions in mm



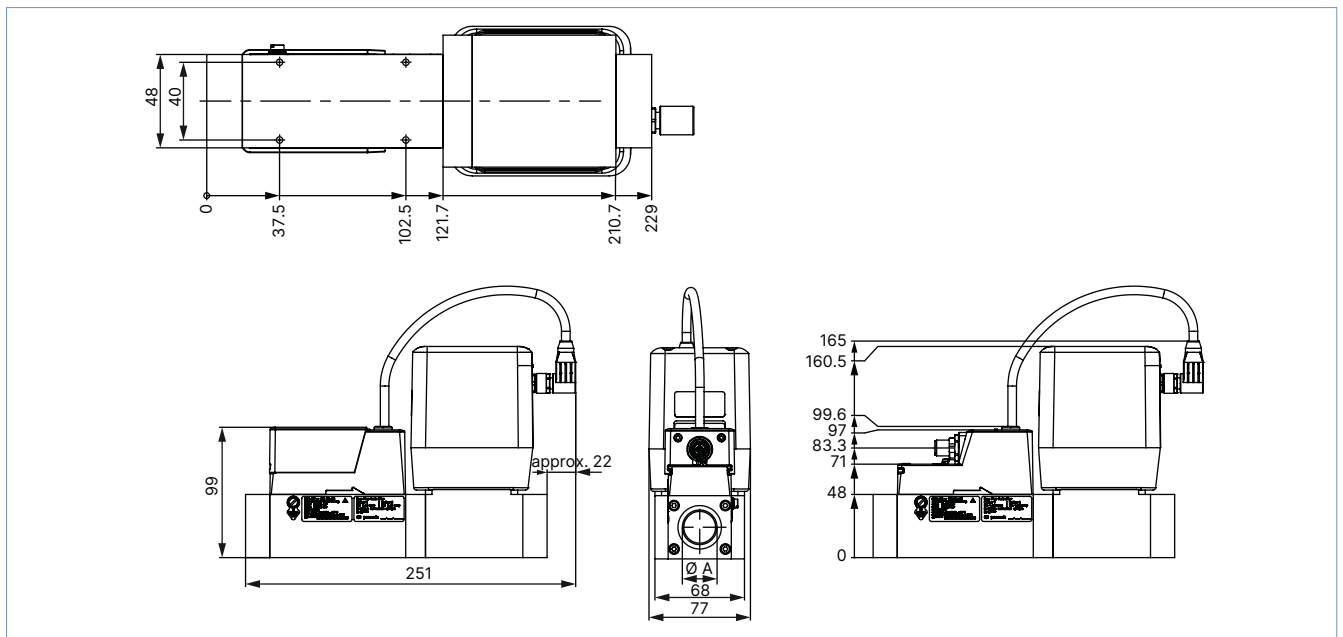


**Variant with base block A3 for very large nominal flow rates**
**Note:**

- From a nominal flow rate  $Q_N > 1500$  l/min onwards, the overall length increases by 30 mm.
- Dimensions in mm

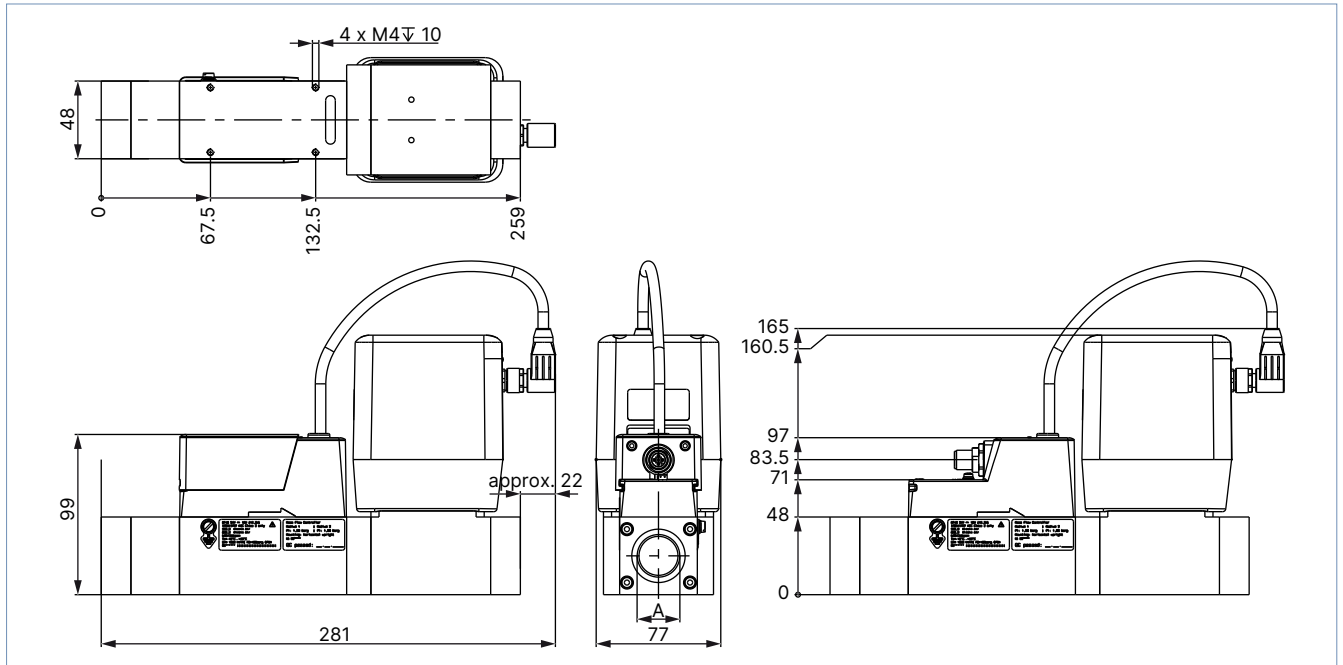

**MFC with valve Type 3285 (DN 20 and DN 25)**
**Variant with base block A2 for large nominal flow rates**
**Note:**

Dimensions in mm

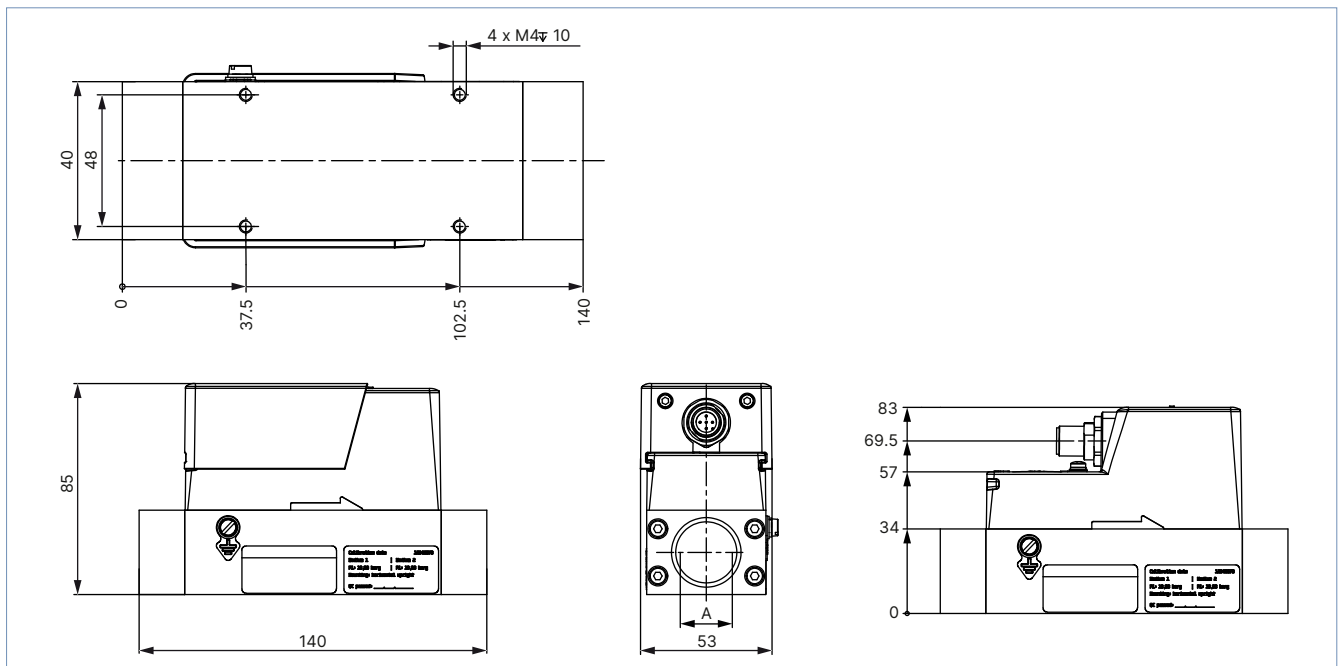


**Variant with base block A3 for very large nominal flow rates**
**Note:**

- From a nominal flow rate  $Q_N > 1500$  l/min onwards, the overall length increases by 30 mm.
- Dimensions in mm

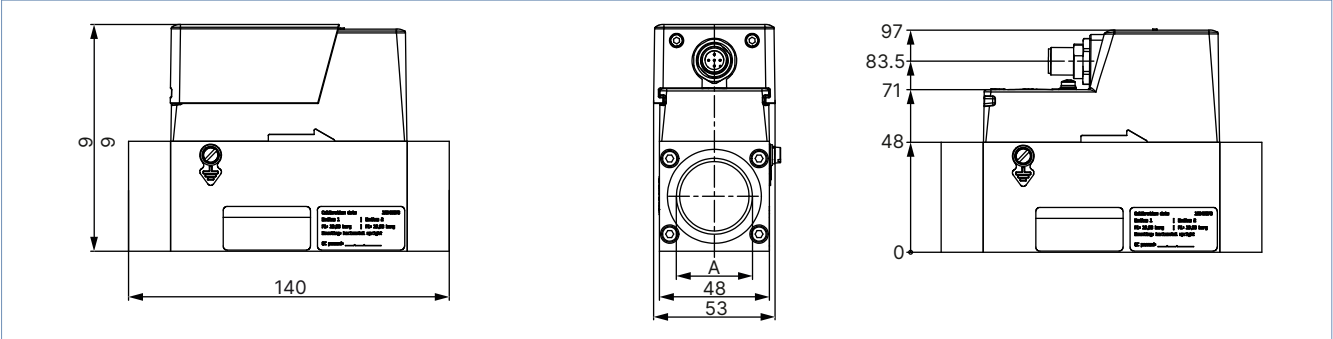

**4.4. MFM variant with büS/CANopen interface**
**Variant with base block 00 or A1 for small nominal flow rates**
**Note:**

Dimensions in mm



Variant with base block A2 for large nominal flow rates

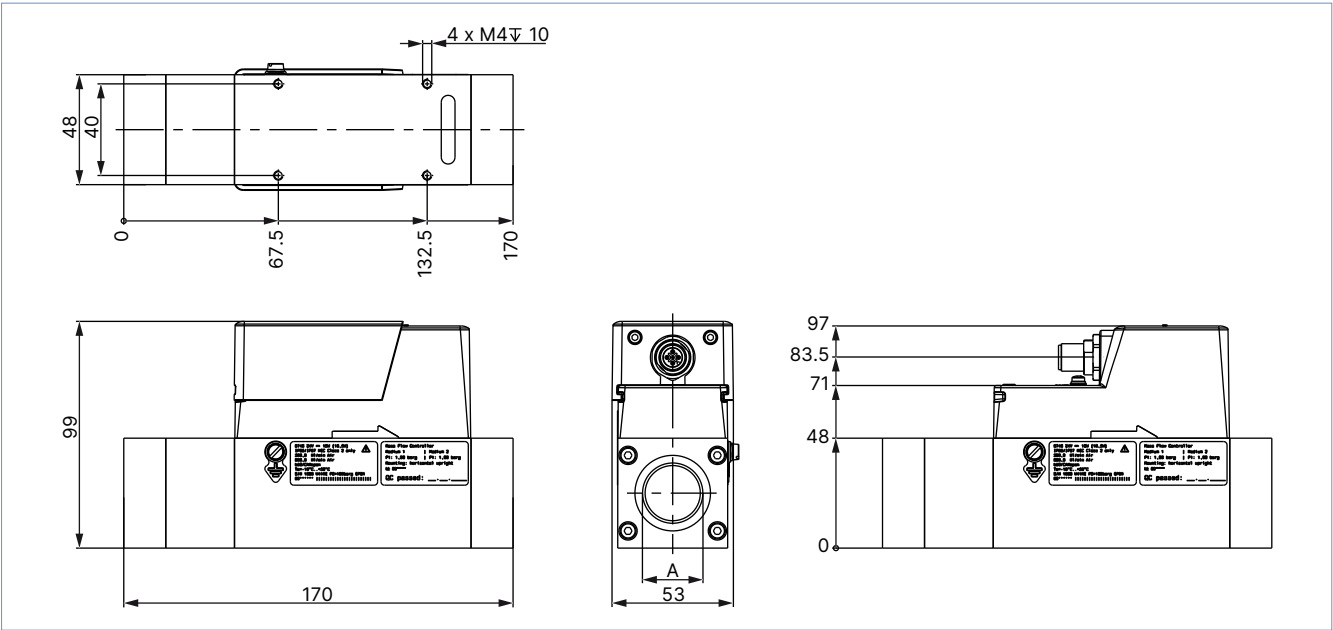
**Note:**  
Dimensions in mm



Variant with base block A3 for very large nominal flow rates

**Note:**

- From a nominal flow rate  $Q_N > 1500$  l/min onwards, the overall length increases by 30 mm.
- Dimensions in mm



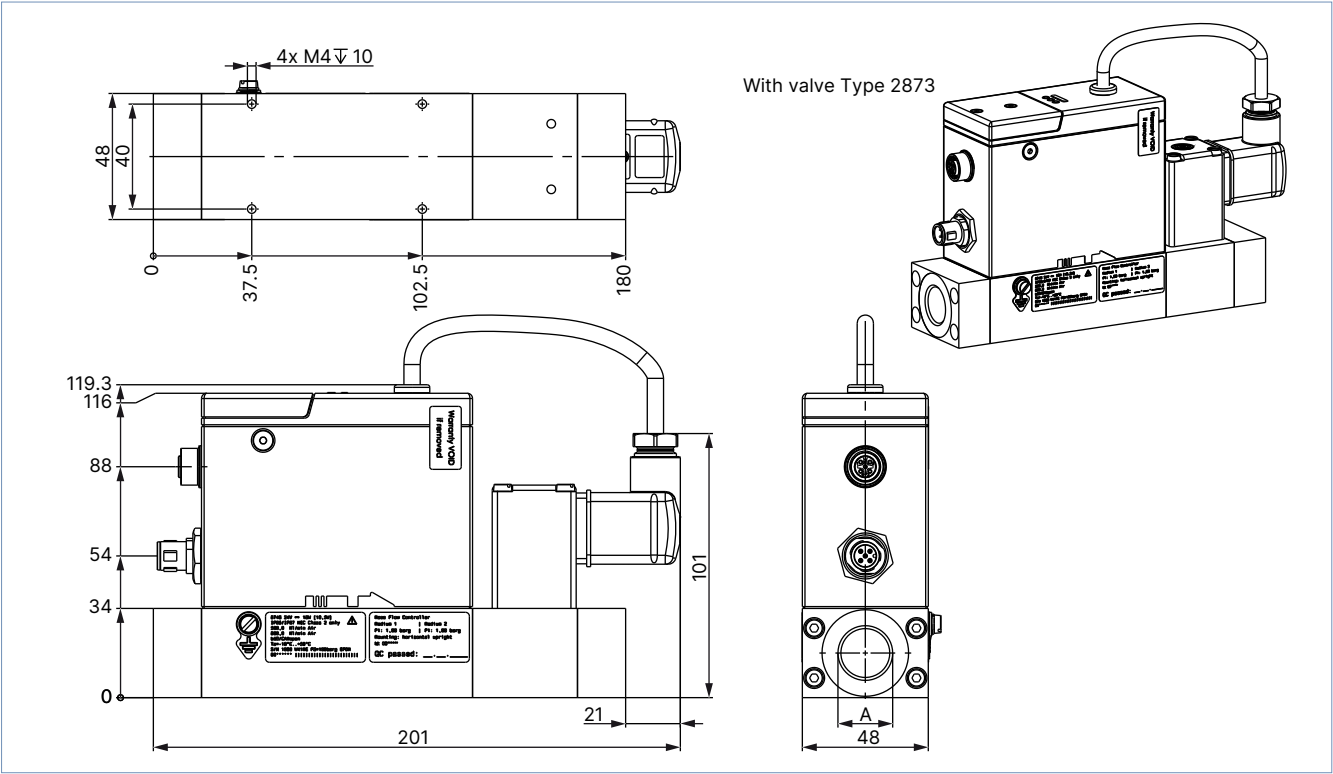
4.5. Variant with electromagnetic proportional valve and analogue interface or PROFIBUS DPV1 interface

MFC with valve Type 2873

Variant with base block 00 or A1 for small nominal flow rates

**Note:**

Dimensions in mm

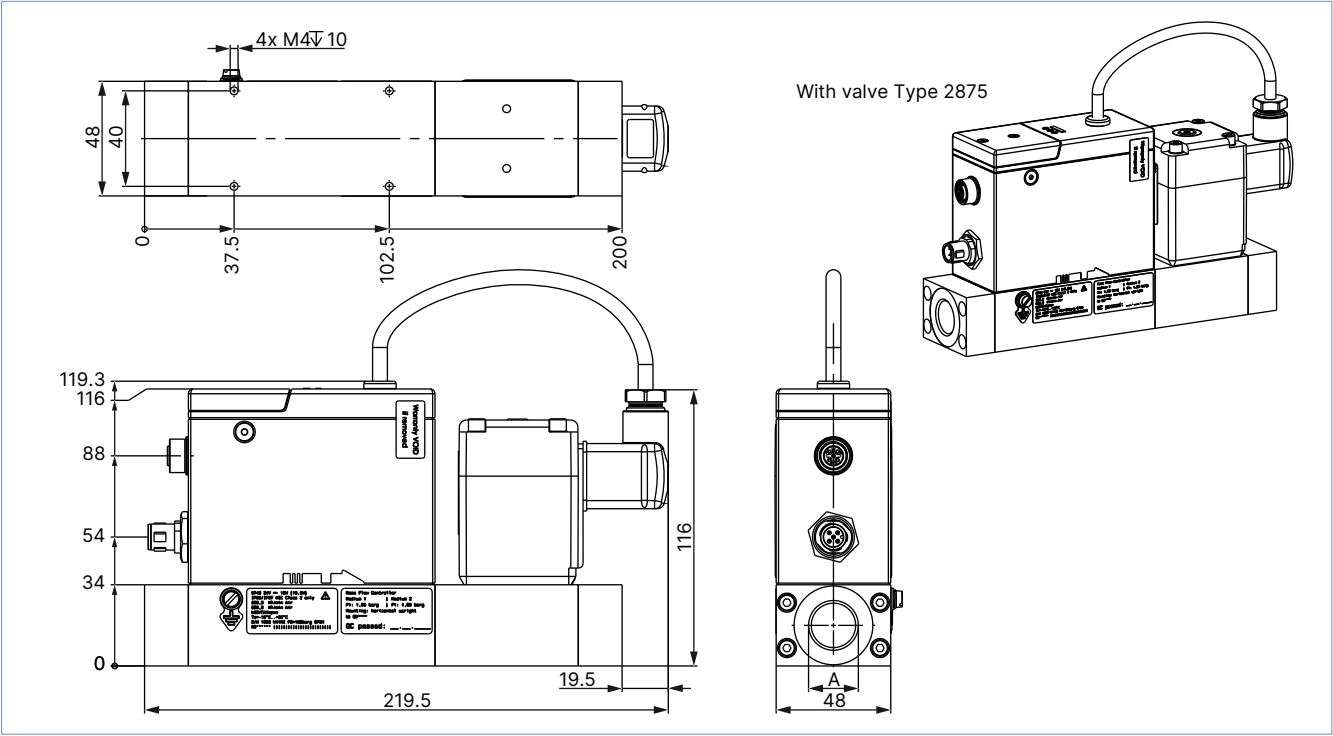


MFC with valve Type 2875

Variant with base block 00 or A1 for small nominal flow rates

**Note:**

Dimensions in mm

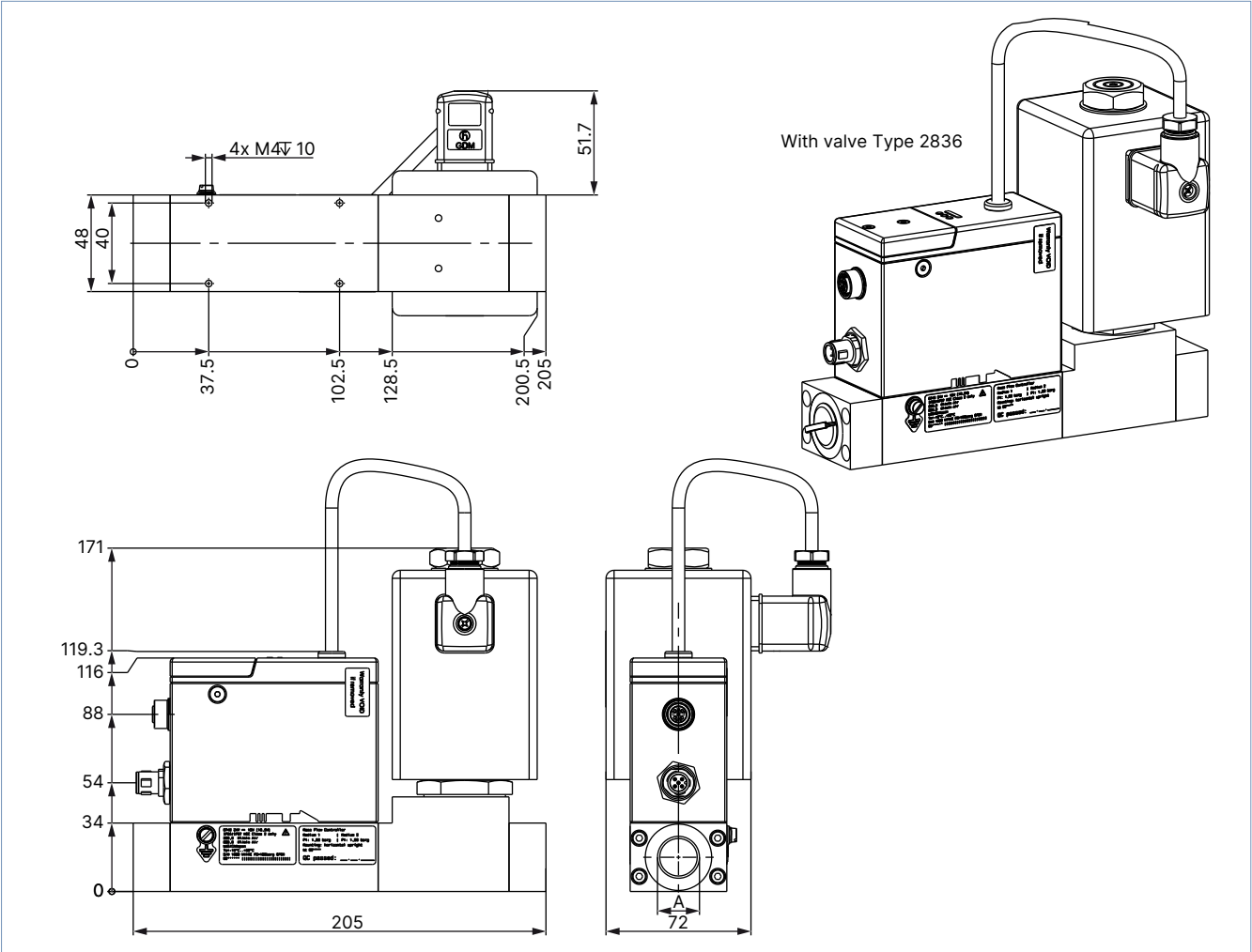


MFC with valve Type 2836

Variant with base block 00 or A1 for small nominal flow rates

**Note:**

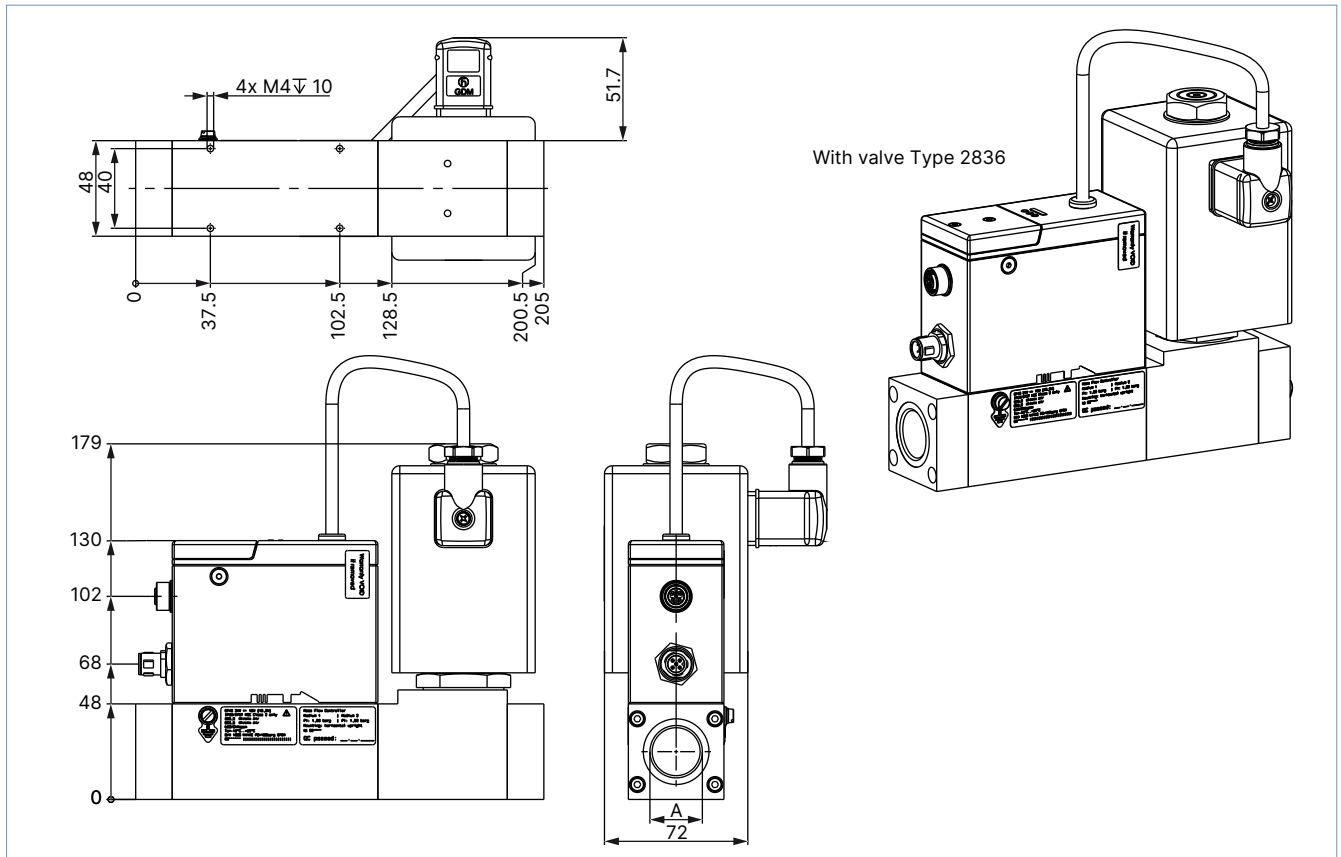
Dimensions in mm



**Variant with base block A2 for large nominal flow rates**

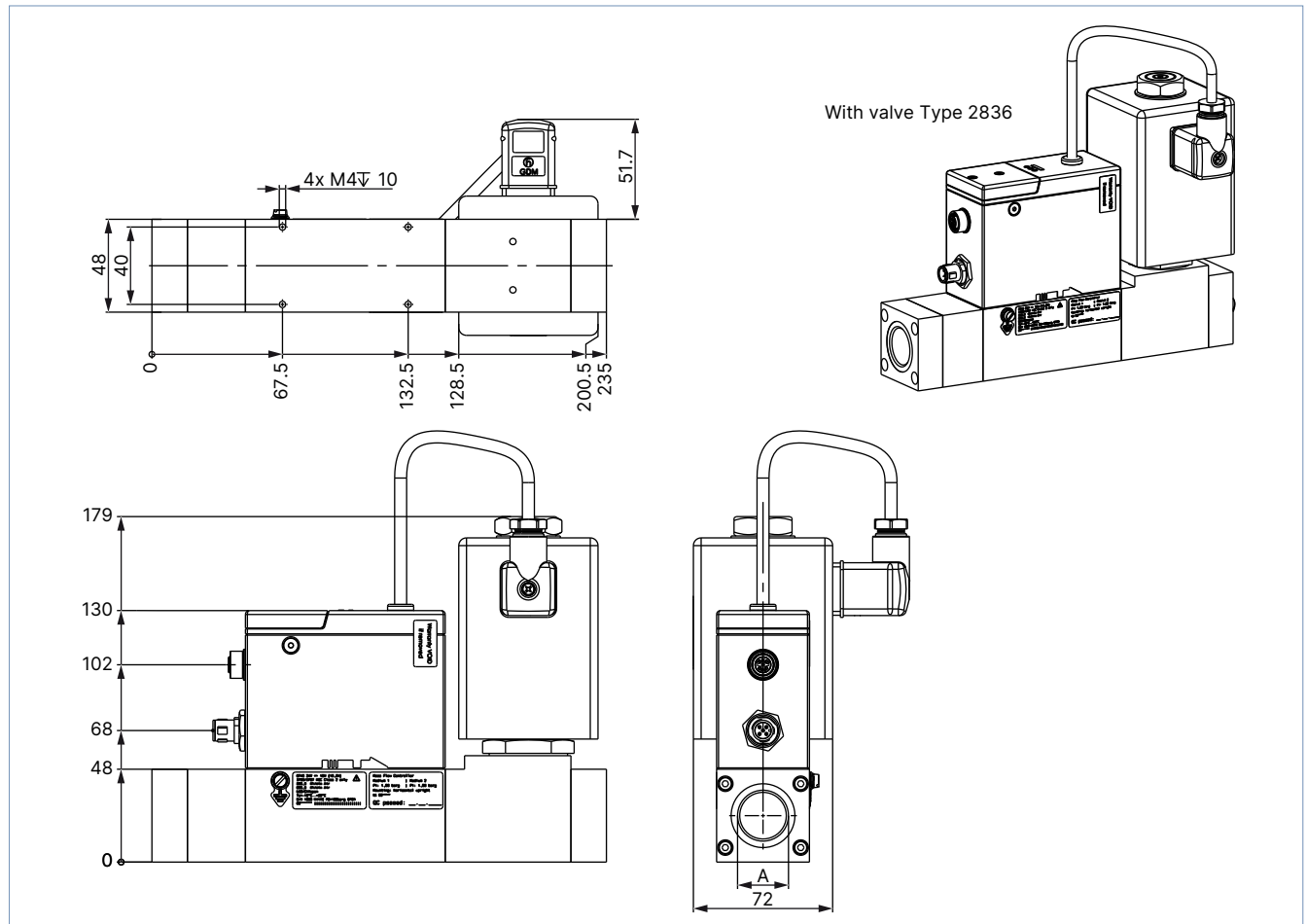
**Note:**

Dimensions in mm



**Variant with base block A3 for very large nominal flow rates**
**Note:**

- From a nominal flow rate  $Q_N > 1500$  l/min onwards, the overall length increases by 30 mm.
- Dimensions in mm





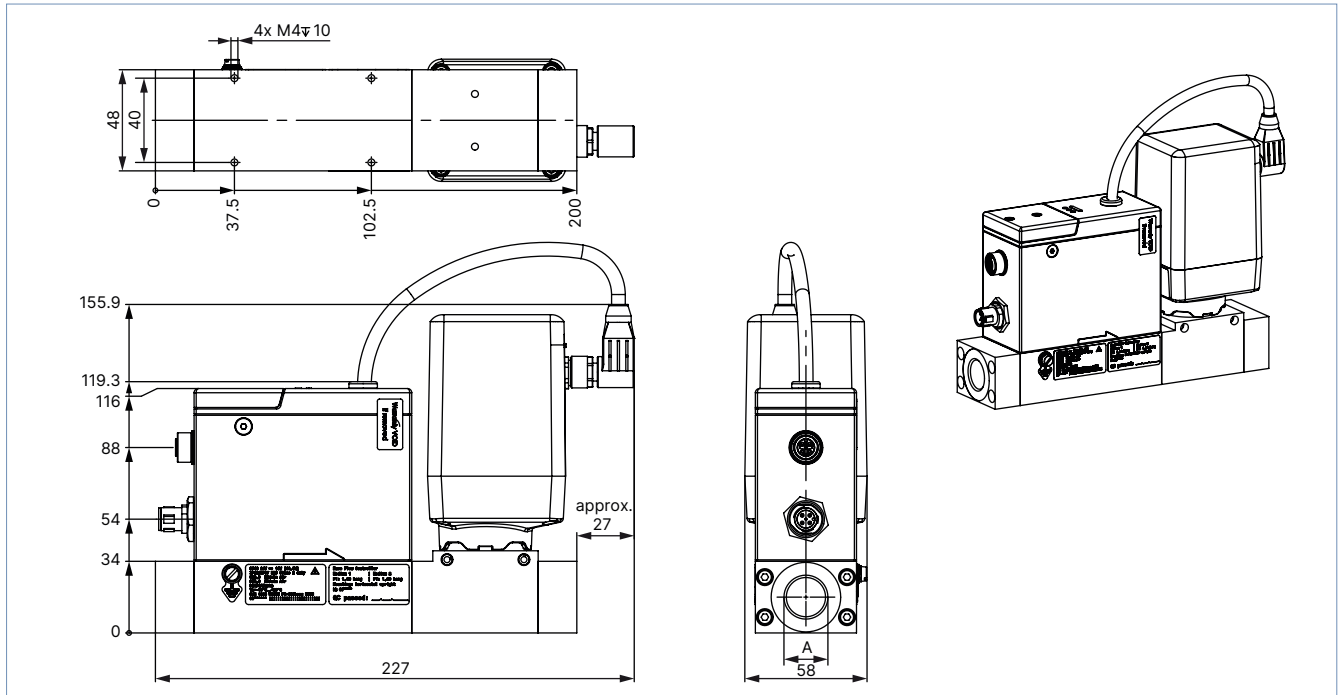
#### 4.6. Variant with electromotive proportional valve and analogue interface or PROFIBUS DPV1 interface

MFC with valve Type 3280

Variant with base block 00 or A1 for small nominal flow rates

**Note:**

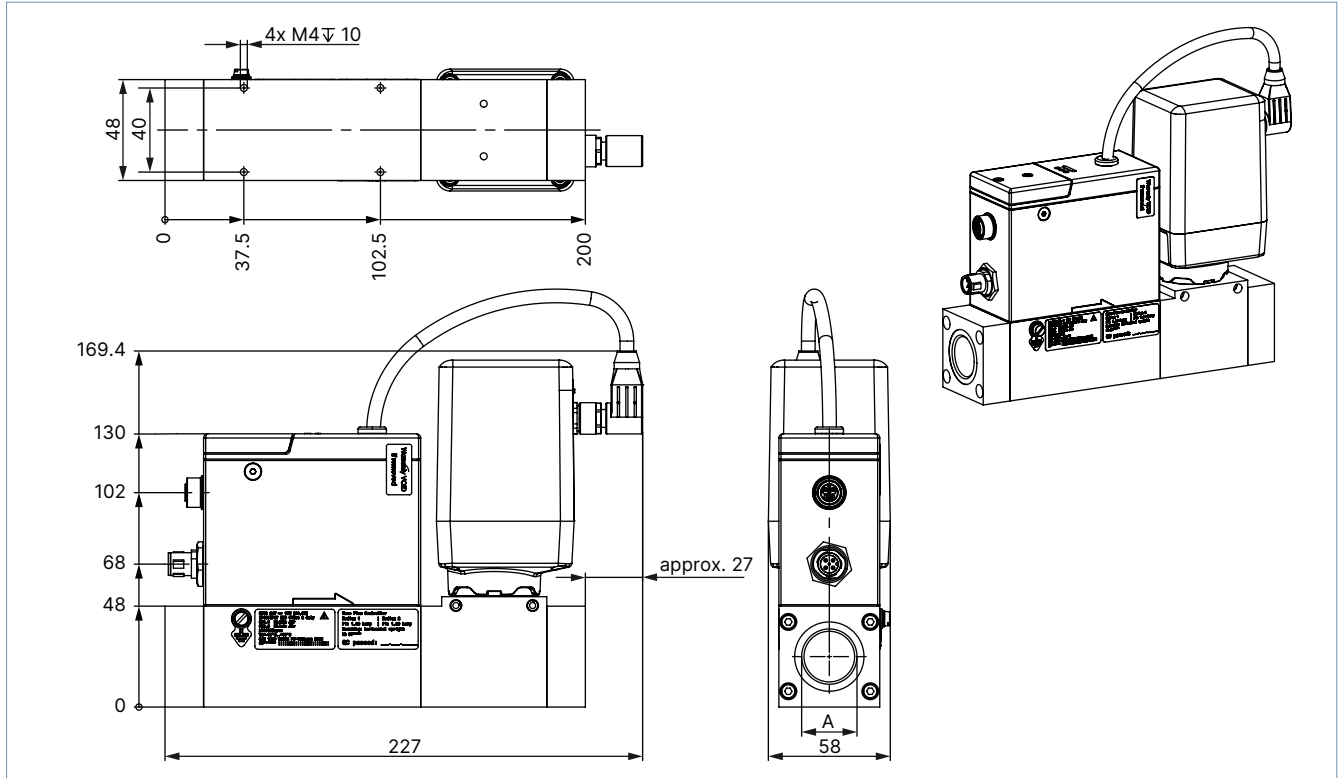
Dimensions in mm



**Variant with base block A2 for large nominal flow rates**

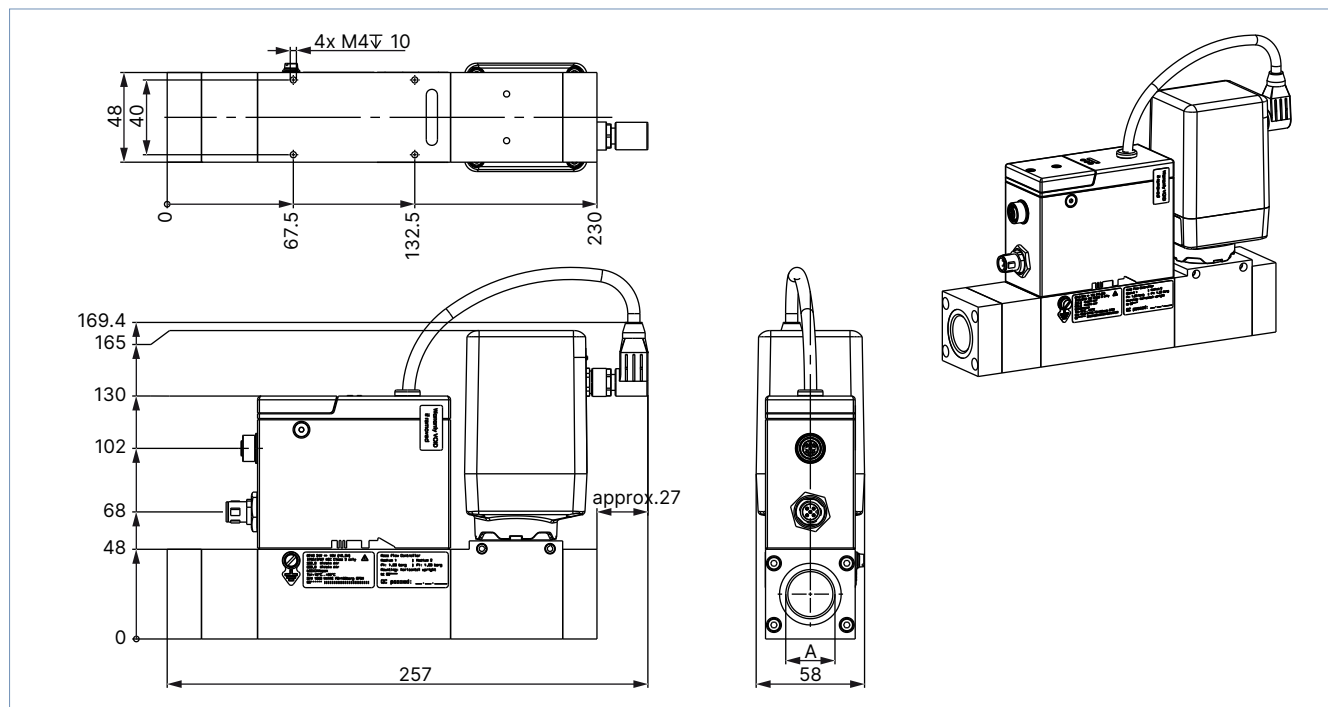
**Note:**

Dimensions in mm

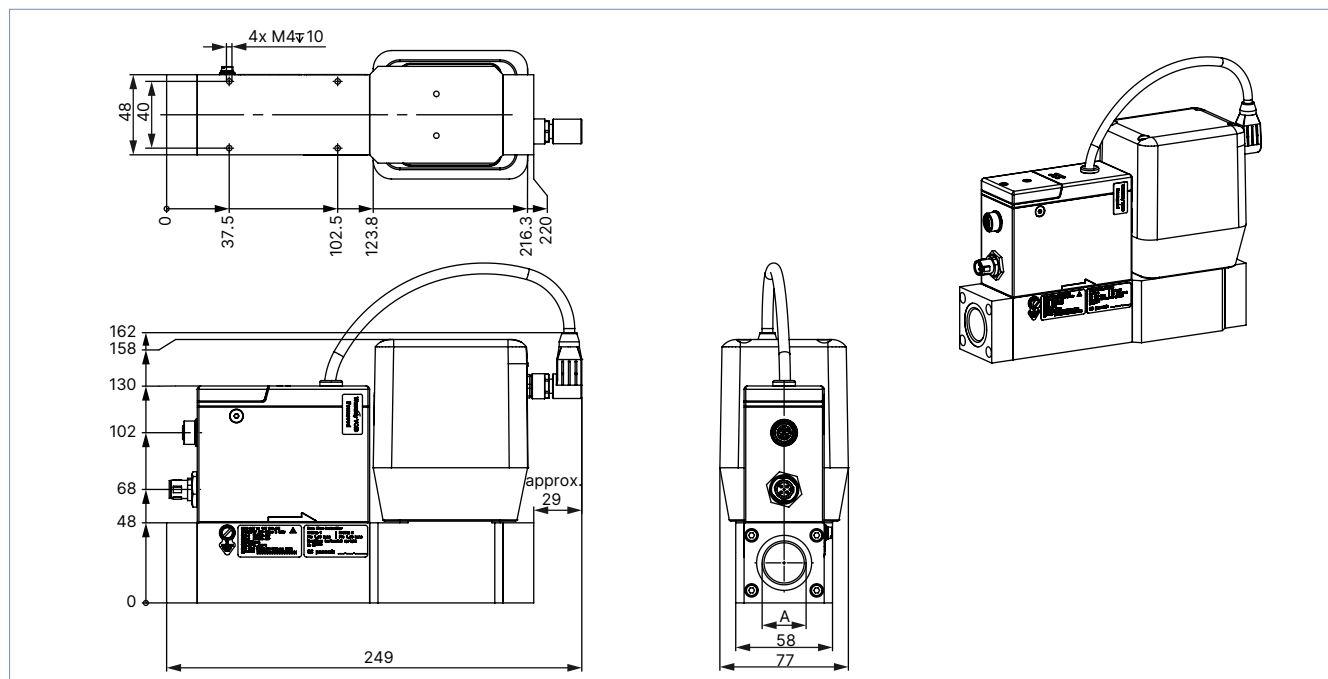


**Variant with base block A3 for very large nominal flow rates**
**Note:**

- From a nominal flow rate  $Q_N > 1500$  l/min onwards, the overall length increases by 30 mm.
- Dimensions in mm

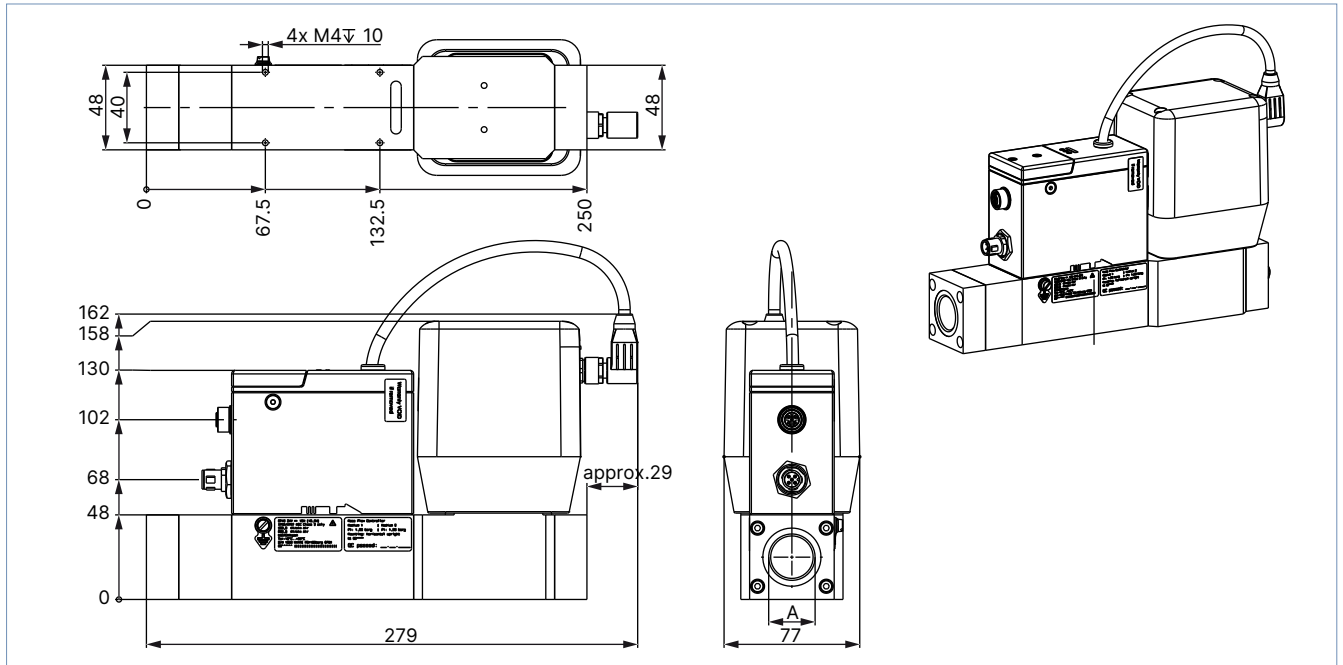

**MFC with valve Type 3285 (DN 12 and DN 15)**
**Variant with base block A2 for large nominal flow rates**
**Note:**

Dimensions in mm

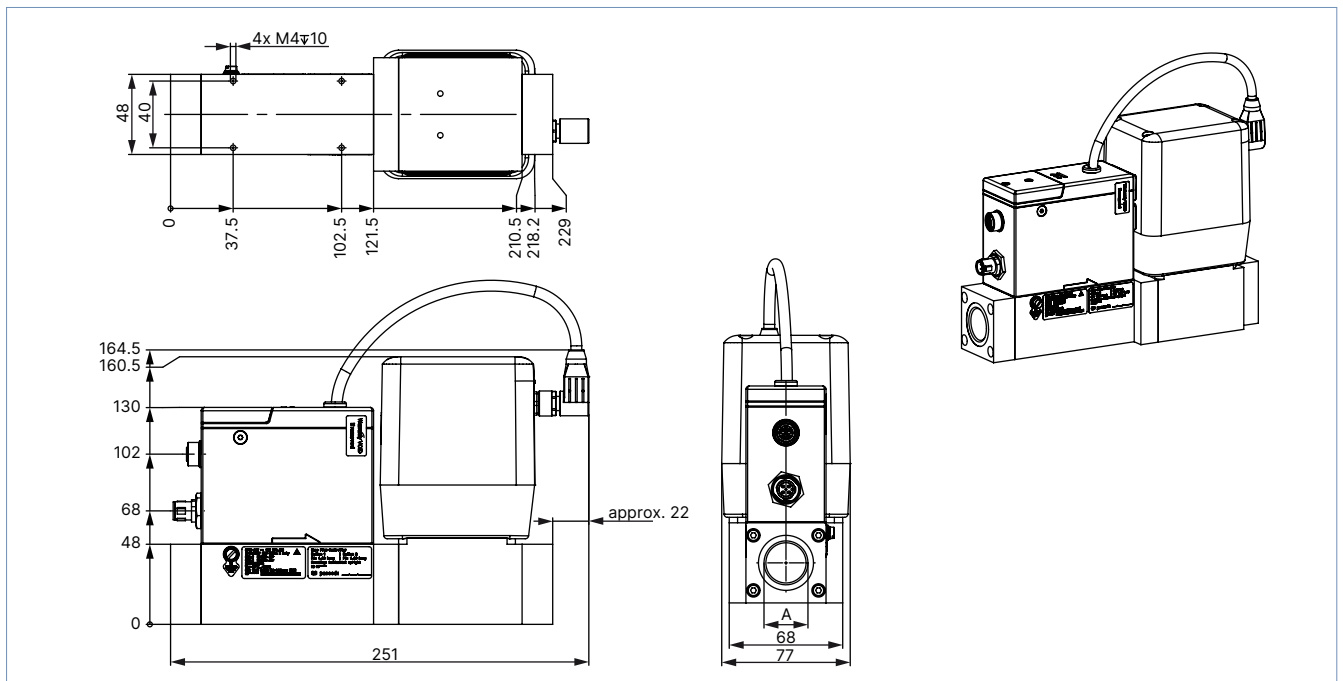


**Variant with base block A3 for very large nominal flow rates**
**Note:**

- From a nominal flow rate  $Q_N > 1500$  l/min onwards, the overall length increases by 30 mm.
- Dimensions in mm

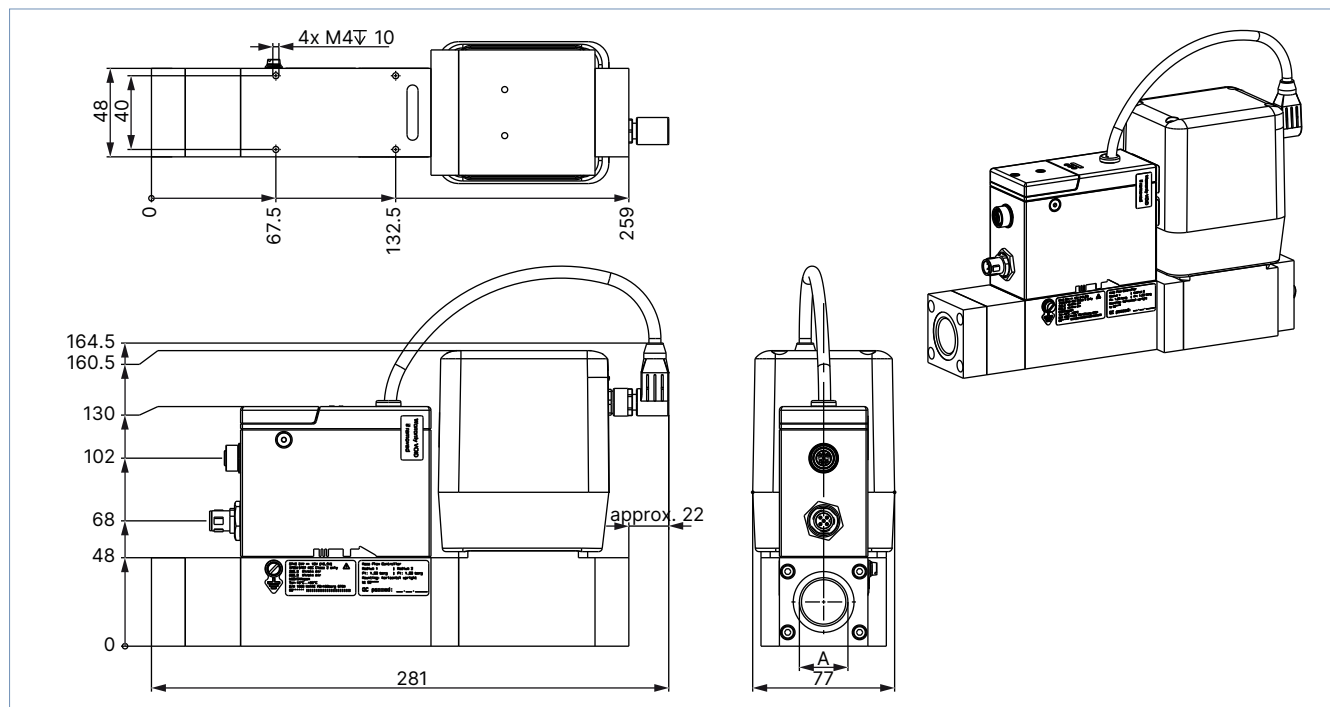

**MFC with valve Type 3285 (DN 20 and DN 25)**
**Variant with base block A2 for large nominal flow rates**
**Note:**

Dimensions in mm

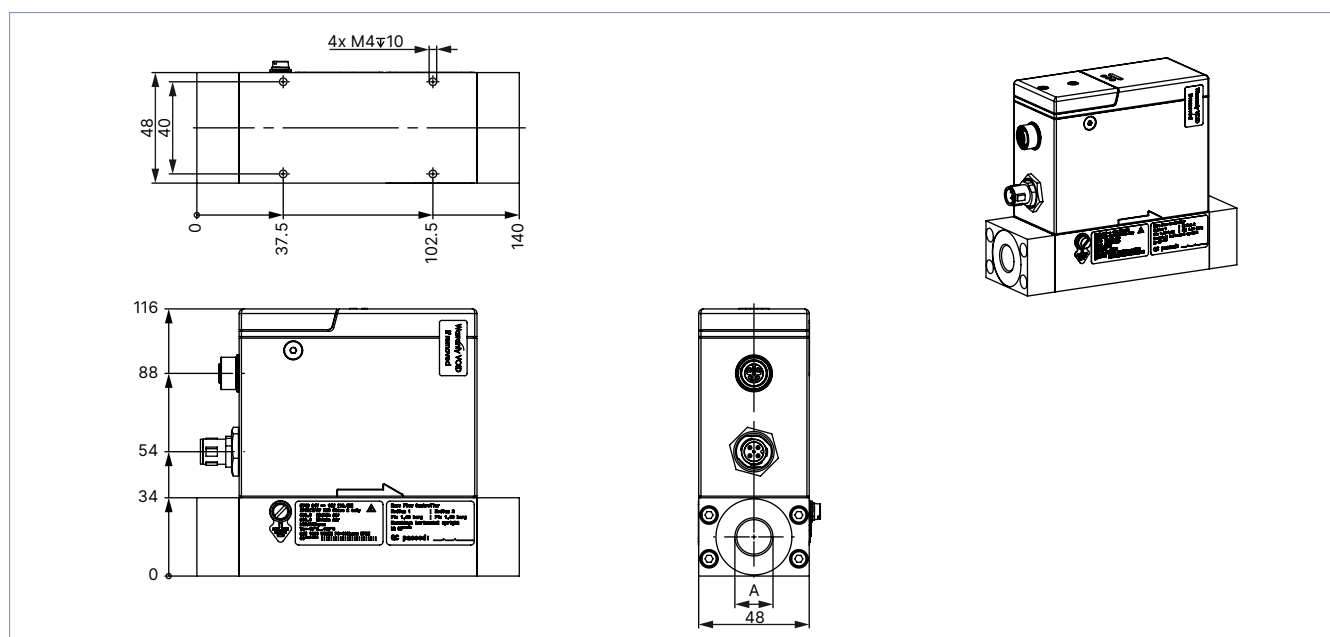


**Variant with base block A3 for very large nominal flow rates**
**Note:**

- From a nominal flow rate  $Q_N > 1500$  l/min onwards, the overall length increases by 30 mm.
- Dimensions in mm


**4.7. MFM variant with analogue interface or PROFIBUS DPV1 interface**
**Variant with base block 00 or A1 for small nominal flow rates**
**Note:**

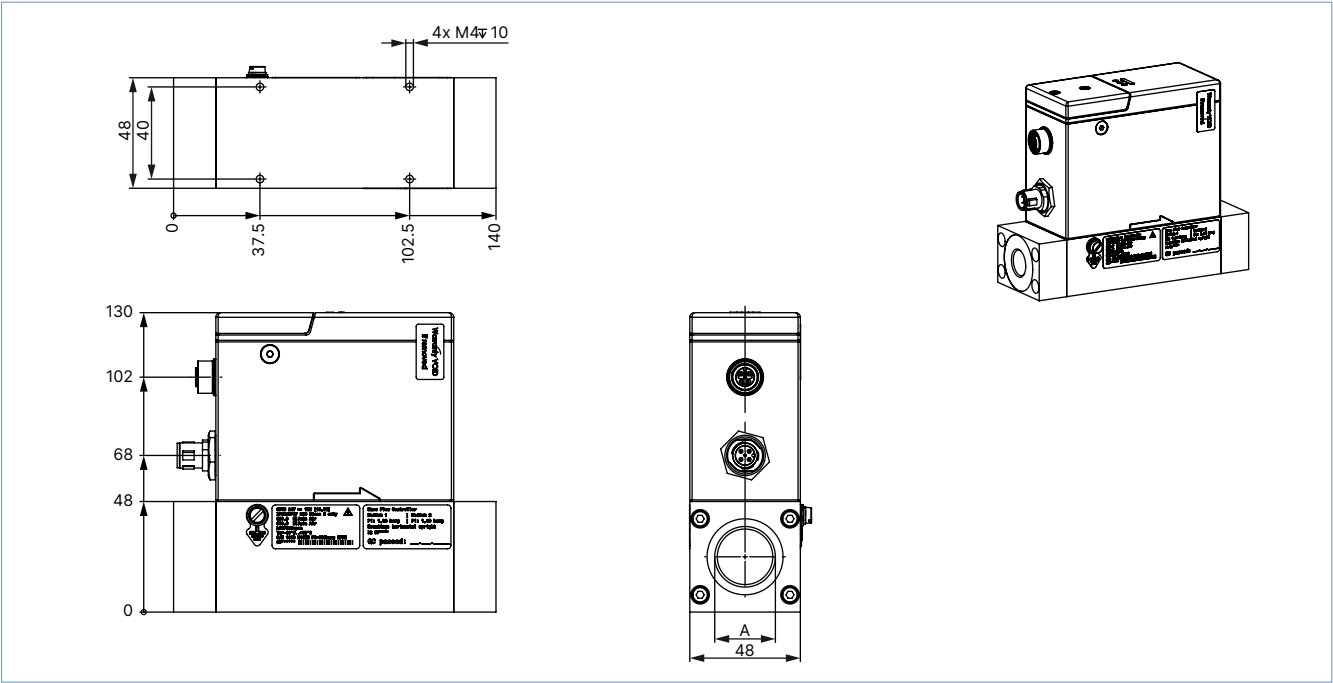
Dimensions in mm



Variant with base block A2 for large nominal flow rates

**Note:**

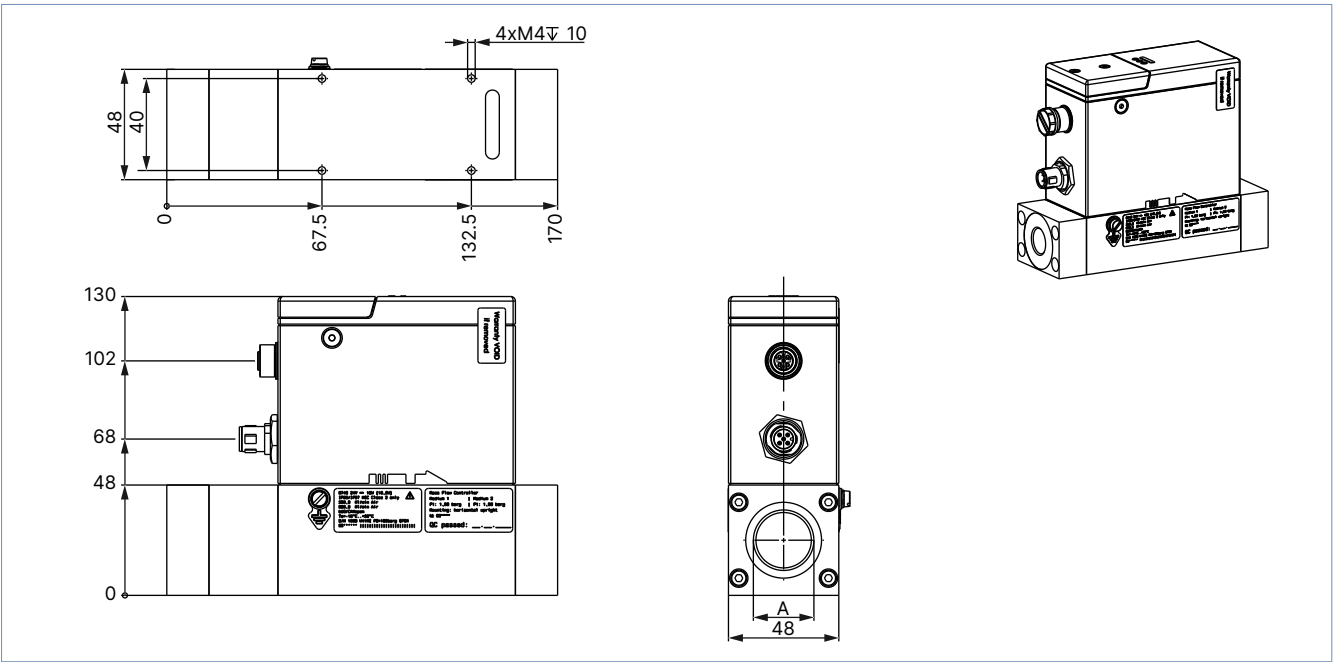
Dimensions in mm



Variant with base block A3 for very large nominal flow rates

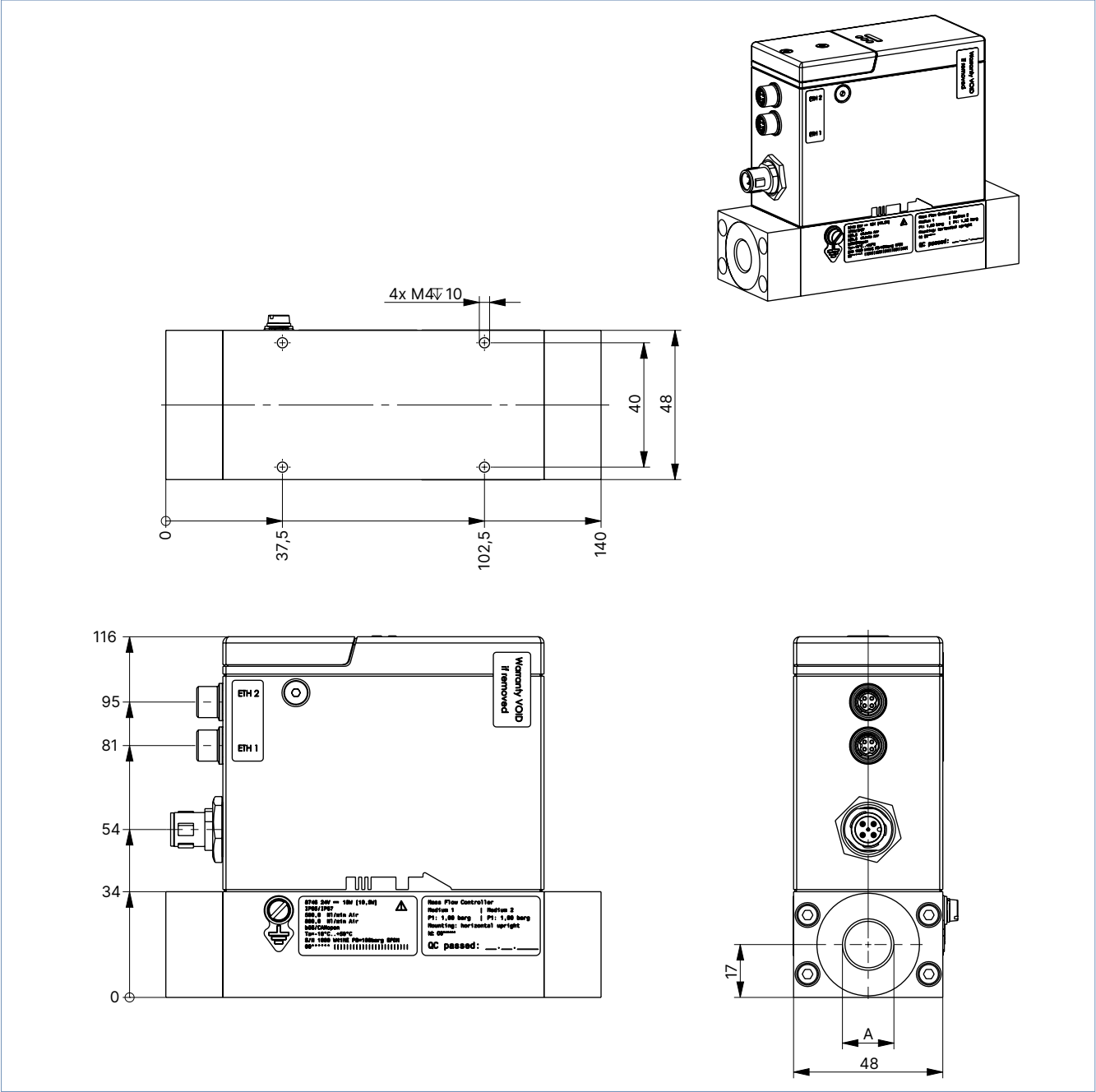
**Note:**

- From a nominal flow rate  $Q_N > 1500$  l/min onwards, the overall length increases by 30 mm.
- Dimensions in mm



4.8. Variant with Industrial Ethernet interface

**Note:**  
Dimensions in mm

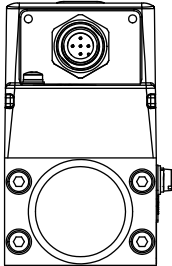


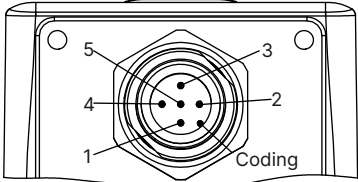
DTS 1000241027 EN Version: AF Status: RL (released | freigegeben | valide) printed: 16.12.2025

5. Product connections

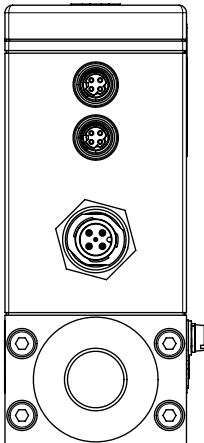
5.1. Communication

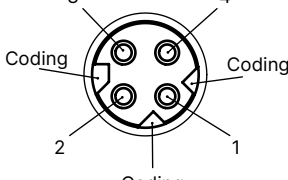
büS/CANopen

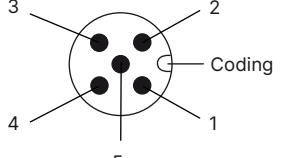


M12 plug, 5-pin (A-coded)	Pin	Assignment
	1	Shielding
	2	24 V
	3	DGND
	4	CAN_H
	5	CAN_L

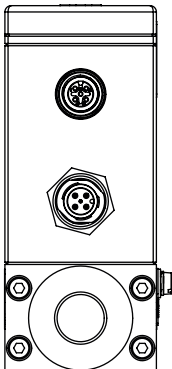
Industrial Ethernet

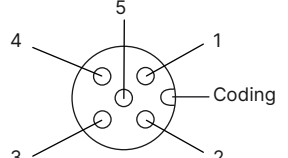


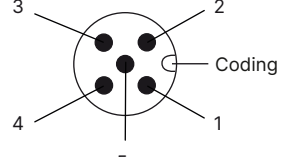
2 x M8 socket, 4-pin (D-coded)	Pin	Assignment
	1	TX +
	2	RX +
	3	TX -
	4	RX -

M12 plug, 5-pin (A-coded)	Pin	Assignment
	1	Shielding
	2	24 V
	3	GND
	4	Not connected
	5	Not connected

Analogue

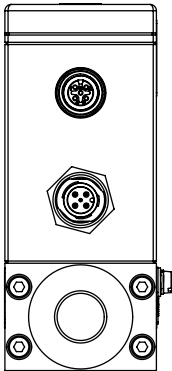


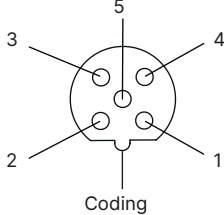
M12 socket, 5-pin (A-coded)	Pin	Assignment
	1	Digital input GND
	2	Digital input +
	3	Relay, reference contact
	4	Relay, normally closed contact
	5	Relay, normally open contact

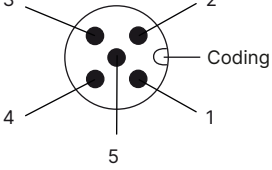
M12 plug, 5-pin (A-coded)	Pin	Assignment
	1	GND for the analogue output (for MFM) or GND for the analogue output and set-point value input (for MFC)
	2	24 V
	3	GND for supply voltage
	4	Set-point value input (not connected for MFM)
	5	Analogue output for measured value



PROFIBUS DPV1



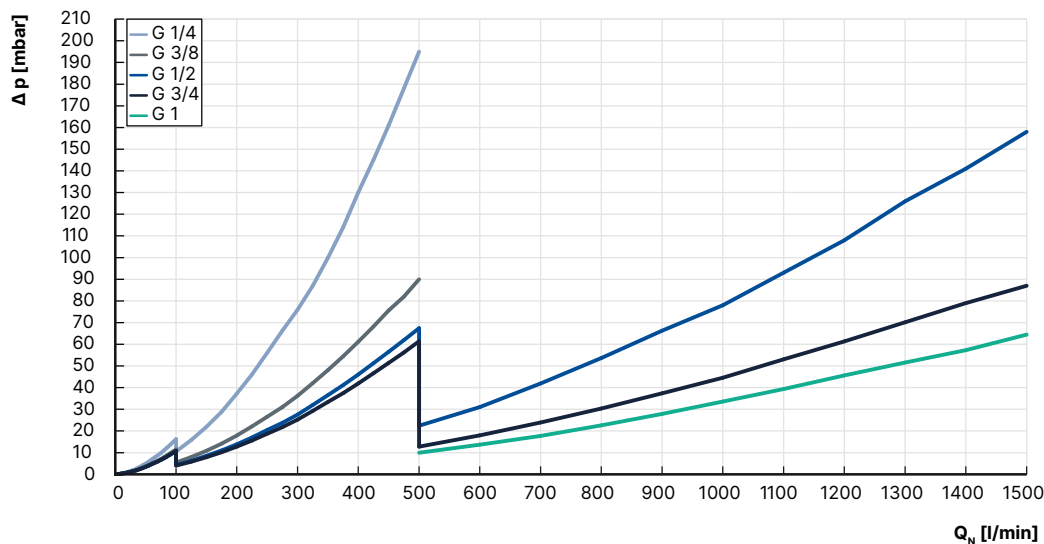
M12 socket, 5-pin (B-coded)	Pin	Assignment
	1	5 V
	2	RxD / TxD (line A)
	3	DGND
	4	RxD / TxD (line B)
	5	Not connected

M12 plug, 5-pin (A-coded)	Pin	Assignment
	1	Shielding
	2	24 V
	3	GND
	4	Not connected
	5	Not connected

## 6. Performance specifications

### 6.1. MFM pressure loss diagram

The diagram shows an example of the pressure loss curves with air flowing through. To determine the pressure loss of other gases, the corresponding air equivalent must first be calculated and the base block used for the other gas must be taken into account.



Formula for calculating the pressure loss in an MFM:

$$\Delta P_{\text{Gas}} = \Delta P_{\text{Air}} \sqrt{\frac{\rho_{N \text{ Gas}}}{\rho_{N \text{ Air}}}}$$

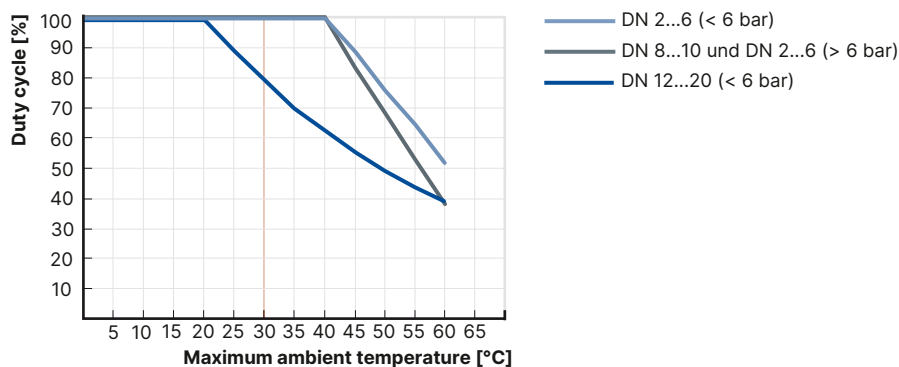
### 6.2. Nominal flow rate of typical gases

**Note:**

- All values refer to 1013.25 mbar abs and 273.15 K (0 °C) (Index N).
- Other gases and gas mixtures are possible on request.

Gas	Min. $Q_N$ [l/min]	Max. $Q_N$ [l/min]
Acetylene	20	320 (from 65 l/min with air calibration)
Ammonia	8	1000
Argon	20	1600
Carbon dioxide	20	800
Air	20	2500
Methane	20	1200
Propane	20	200
Oxygen	20	2500
Nitrogen	20	2500

### 6.3. Derating diagram for electromotive variants

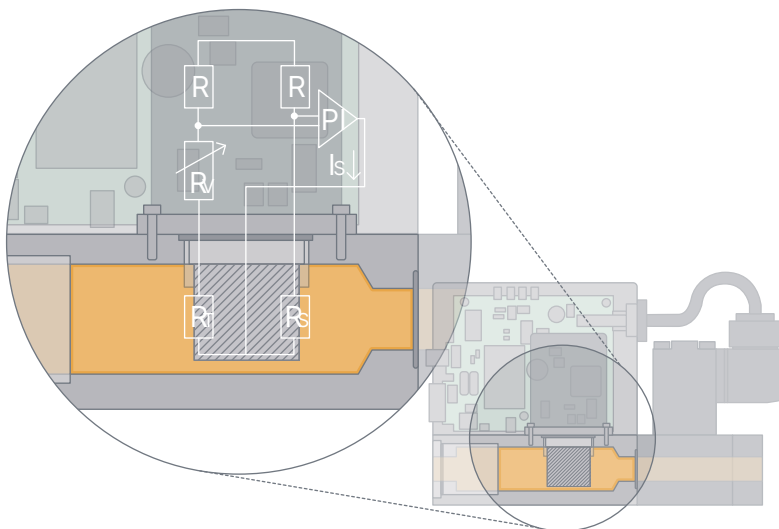


## 7. Product operation

### 7.1. Measurement principle

This sensor works as a hot-film anemometer in the so called CTA operational mode (Constant Temperature Anemometer). 2 resistors with a precisely specified temperature coefficient located directly in the media flow and 3 further resistors are connected to form a measuring bridge. The first resistor in the gas flow ( $R_T$ ) measures the fluid temperature, while the second, low value resistor ( $R_s$ ) is always heated just enough to keep it at a fixed, specified excess temperature with respect to the fluid temperature. The heating current required for this purpose is a measure of heat dissipation and represents the primary measured quantity.

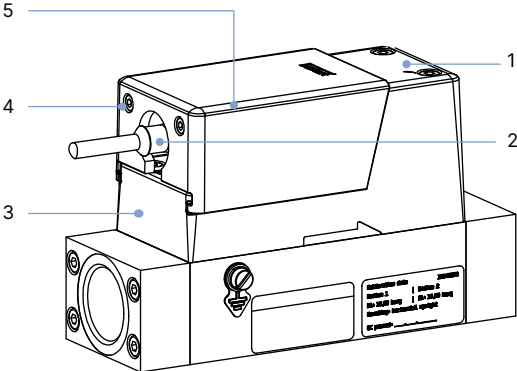
Adequate flow conditioning within the MFC and calibration with high-quality flow standards ensure that the amount of gas flowing through per time unit can be derived from the primary signal with a high degree of accuracy.



8. Product design and assembly

8.1. Measures to comply with ATEX requirements

**Note:**  
Devices with ATEX conformity meet degree of protection IP65.

Device	No.	Description
	1	The normative requirements for cable and line entries are met for devices with an external valve.
	2	The M12 plug provides degree of protection IP65 regardless if plugged in or not.
	3	The die-cast housing provides IP65 protection even under high mechanical stress.
	4	The screws prevent the impact protection cover and thus the M12 connection from loosening under tensile stress.
	5	The protective cap prevents damage of the M12 plug and all connected elements under mechanical stress. No particular ATEX sockets are required.

## 9. Product accessories

### 9.1. Bürkert Communicator software

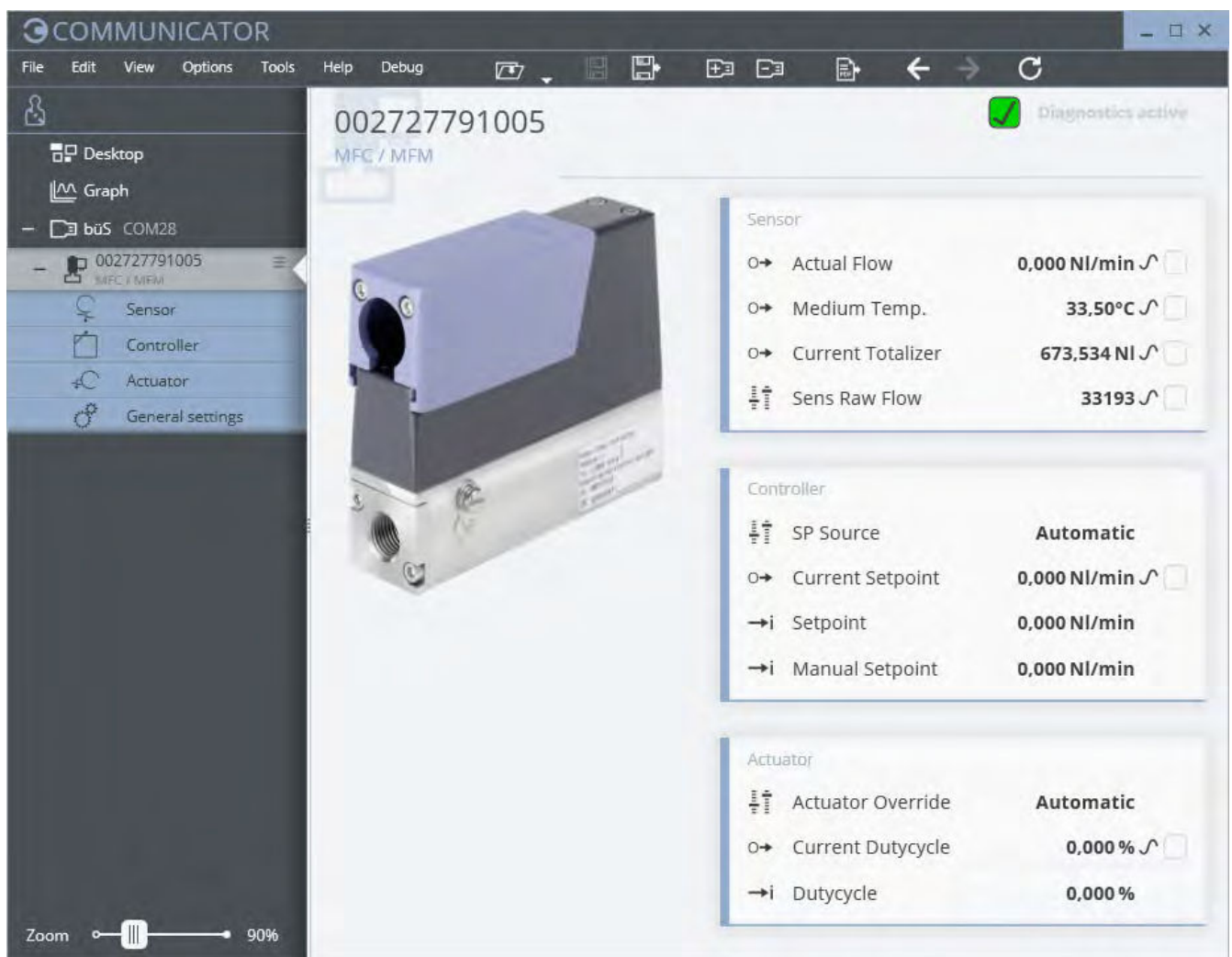
**Note:**

The corresponding communication software can be downloaded from the website [Type 8920 ►](#).

The Bürkert Communicator is the most important software component of the EDIP (Efficient Device Integration Platform). Various features of this universal tool simplify the configuration and parametrisation of devices equipped with a digital CANopen-based interface. With this tool, the user has a complete overview of cyclic process values as well as acyclic diagnostic data. The integrated graphical programming environment enables the creation of decentralised sub-system control functions. The connection to the PC is established with a USB-bus interface set. The adapter is available as an accessory (see [“10.5. Ordering chart accessories” on page 39](#)).

The Bürkert Communicator enables:

- Configuration, parametrisation and diagnosis of EDIP devices / networks
- Switching between defined gases
- Easy and comfortable mapping of cyclic values
- Graphic display, monitoring and storage of process values
- Firmware update of the connected EDIP devices
- Saving and restoring device configurations
- Zero-point adjustment in case of changed ambient conditions
- Guided re-calibration routine



## 9.2. Connecting Type 8746 with the Bürkert Communicator software

The Bürkert Communicator interface is based on CANopen. An appropriate bus termination is mandatory.

- Type 8746 Analogue, Industrial Ethernet or PROFIBUS DPV1:
  - Activate the switchable terminating resistor on the bÜS stick.
  - The device is connected via the micro USB socket on the device (USB-bÜS interface set 2 contains the necessary accessories).
- Type 8746 bÜS/CANopen:
  - Activate the switchable terminating resistor on the bÜS stick. Exception: if the device is already integrated in a properly terminated bus network, the terminating resistor must not be activated.
  - The device is connected via the 5-pin M12 plug (USB-bÜS interface set 1 contains the necessary accessories).

Note: no external power supply must be connected to the micro USB socket. The device must be provided with power as described in chapter “5. Product connections” on page 32.

## 9.3. Configuration management for easy device replacement

Depending on the electrical connection of the MFC, the following options are available for device replacement:

- If a device needs to be replaced, the memory card can be removed from the defective device and can be inserted into the new device. This transfers all data from the device to be replaced to the new device. The memory card is available as an accessory and must be ordered separately (see “10.5. Ordering chart accessories” on page 39).
- Option for Type 8746 bÜS/CANopen: the device is exchanged via the configuration provider of the higher-level gateway control (ME43 or ME63). This requires a memory card in the gateway. The memory card is available as an accessory and must be ordered separately (see “10.5. Ordering chart accessories” on page 39).

In order to successfully exchange the device, it is necessary that both the new device and the device to be replaced have the same article number.

## 9.4. Web server for Industrial Ethernet variant

The Industrial Ethernet-based devices (except for the EtherCAT® protocol) from software version A.13.00.00 onwards have an integrated web server. The server can be accessed via a web browser by entering the device's IP address (factory setting IP192.168.1.100).

# 10. Ordering information

## 10.1. Bürkert eShop



### Bürkert eShop – Easy ordering and quick delivery

You want to find your desired Bürkert product or spare part quickly and order directly? Our online shop is available for you 24/7. Sign up and enjoy all the benefits.

[Order online now](#)

## 10.2. Recommendation regarding product selection

### Note:

Use the Product Enquiry Form (see “10.4. Bürkert Product Enquiry Form” on page 39) for information on the device layout and send it to us once completed.

For the proper choice of the actuator orifice within the MFC, you need to know not only the required maximum flow rate  $Q_N$  but also the pressure values directly upstream and downstream of the MFC ( $p_1, p_2$ ) at  $Q_N$ . These are often not identical to the inlet and outlet pressure of the entire system, because there are usually additional flow resistances (pipework, additional shut-off valves, nozzles, etc.) both upstream and downstream of the MFC.

Use the Product Enquiry Form to indicate the pressures directly upstream and downstream of the MFC. If the pressure values are unknown or not accessible to measurement, an estimation is necessary, taking into account the approximate pressure drops via the flow resistances before and after the MFC at  $Q_N$ . The maximum expected inlet pressure  $p_{1max}$  must be specified to ensure the tight-closing function of the actuator in all operating states.

### 10.3. Bürkert product filter

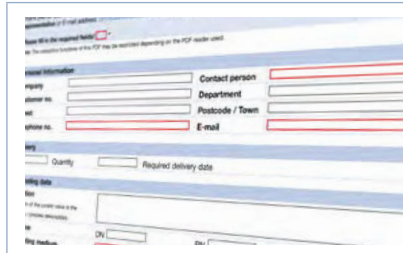


#### Bürkert product filter – Get quickly to the right product

You want to select products comfortably based on your technical requirements? Use the Bürkert product filter and find suitable articles for your application quickly and easily.

[Try out our product filter](#)

### 10.4. Bürkert Product Enquiry Form












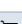
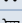


#### Bürkert Product Enquiry Form – Your enquiry quickly and compactly

Would you like to make a specific product enquiry based on your technical requirements? Use our Product Enquiry Form for this purpose. There you will find all the relevant information for your Bürkert contact. This will enable us to provide you with the best possible advice.

[Fill out the form now](#)

### 10.5. Ordering chart accessories

Description	Article no.
<b>General accessories</b>	
USB-büS interface set 1 (Type 8923) for connection to the Bürkert Communicator software: includes connection cable (M12 and micro USB), stick with integrated terminating resistor, power supply and software	772426
USB-büS interface set 2 (Type 8923) for connection to the Bürkert Communicator software: includes büS stick, connection cable to M12 plug, M12 connection cable on micro USB for the büS service interface and Y-distributor, cable length: 0.7 m	772551
Power supply unit Phoenix Class2 (Type 1573), 85...240 V AC/24 V DC, 1.25 A, NEC Class 2 (UL 1310)	772438
Power supply unit for standard rail (Type 1573), 100...240 V AC/24 V DC, 1 A, NEC Class 2 (UL 1310)	772361
Power supply unit for standard rail (Type 1573), 100...240 V AC/24 V DC, 2 A, NEC Class 2 (UL 1310)	772362
Power supply unit for standard rail (Type 1573), 100...240 V AC/24 V DC, 4 A	772363
Memory card	On request
Device description files for software interfaces	Download from <b>Type 8746</b>
Software Bürkert Communicator	Download from <b>Type 8920</b>
<b>For Type 8746 büS/CANopen</b>	
büS cable extension, M12, cable length: 0.1 m	772492
büS cable extension, M12, cable length: 0.2 m	772402
büS cable extension, M12, cable length: 0.5 m	772403
büS cable extension, M12, cable length: 1 m	772404
büS cable extension, M12, cable length: 3 m	772405
büS socket, M12, straight, A-coded <sup>1)</sup>	772416
büS plug, M12, straight, A-coded <sup>1)</sup>	772417
büS socket, M12, angled, A-coded <sup>1)</sup>	772418
büS plug, M12, angled, A-coded <sup>1)</sup>	772419
büS Y-plug	772420
büS Y-plug for linking two separately supplied segments of a büS network	772421
büS plug, M12, terminating resistor 120 Ω	772424
büS plug, M12, terminating resistor 120 Ω	772425
LabVIEW device driver	On request

Description	Article no.
EDS file	Download from <b>Type 8746 ►</b>
<b>Power supply Type 8742 Analogue/Industrial Ethernet /Profibus DPV1</b>	
<b>Communication Type 8742 Analogue, analogue signals</b>	
M12 socket with cable, on strands, A-coded, cable length: 0.7 m	772626 
M12 socket with cable, on strands, A-coded, cable length: 1 m	772409 
M12 socket with cable, on strands, A-coded, cable length: 3 m	772410 
M12 socket with cable, on strands, A-coded, cable length: 5 m	772411 
M12 socket with cable, on strands, A-coded, cable length: 10 m	772412 
büS socket, M12, straight, A-coded <sup>1.)</sup>	772416 
<b>Communication Type 8742 Analogue, digital signals</b>	
M12 plug with cable, on strands, A-coded, cable length: 5 m	566923 
M12 plug with cable, on strands, A-coded, cable length: 10 m	571393 
<b>Communication Type 8742 Industrial Ethernet <sup>2.)</sup></b>	
M8 plug, D-coded, to M12 plug, D-coded, cable length: 0.3 m	575443 
<b>Communication Type 8742 PROFIBUS DPV1 <sup>3.)</sup></b>	
M12 plug, 5-pin, B-coded, straight	918198 
M12 socket, 5-pin, straight (coupling)	918447 
PROFIBUS DPV1 T-distributor	918531 
PROFIBUS DPV1 terminating resistor, M12 plug, B-coded	902553 

1.) For space reasons, M12 individual cable plugs may not be suitable for simultaneous use on the same side as a Y-distributor. Use a commercially available overmolded cable in this case.

2.) All approved Ethernet cables with M8 connectors possible

3.) All approved Profibus accessories with M12 connectors (B-coded) possible