

VEGASCAN 693

Controller for up to 15 HART sensors



Application area

The VEGASCAN 693 is a controller and display instrument for up to 15 continuously measuring 4 ... 20 mA/HART sensors. Hence the measuring results from level, gauge and process pressure measurements can be easily transferred to control, visualization and remote data transmission systems. Interfaces and functions for connecting to networks and remote data transmission systems are integrated. It is particularly suitable for application in the area of local and global inventory management.

Your benefit

- Recording of up to 200,000 measured values with instruments with digital interface
- Simple integration into the Intranet/Extranet via integrated web server
- Measured value and message transmission via e-mail and SMS as well as data transmission to the VEGA Inventory System

Function

The VEGASCAN 693 controller can power up to 15 HART sensors and process their digital measured values. The measured value transmission is carried out via a bus system (HART multidrop). The requested parameter is shown in the display and can also be outputted to one of the integrated interfaces and the web server.

Optional interfaces offer the possibility of remote enquiry of measured values. With the built-in webserver, the measured values can be made available in a network.

Approvals

Worldwide approvals are available for VEGA instruments, e.g. for use in hazardous areas, on ships or in hygienic applications.

The technical data in the respective safety instructions are valid for approved instruments (e.g. with Ex approval). In some cases, these data can differ from the data listed herein.

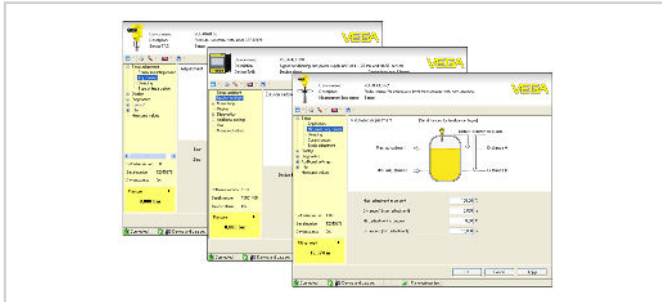
You can find detailed information on the existing approvals with the appropriate product on our homepage.

Technical data

Series	Module unit with plug-in socket for mounting on carrier rail (35 x 7.5 according to DIN EN 50022/60715)
Connection terminals	
– Type of terminal	Screw terminal
– Max. wire cross-section	1.5 mm ² (AWG 16)
Operating voltage non-Ex version	
– Nominal voltage AC	24 ... 230 V (-15 %, +10 %) 50/60 Hz
– Nominal voltage DC	24 ... 230 V (-15 %, +10 %)
Operating voltage Ex version	
– Nominal voltage AC	24 ... 230 V (-15 %, +10 %) 50/60 Hz
– Nominal voltage DC	24 ... 65 V (-15 %, +10 %)
Max. power consumption	12 VA; 7.5 W
Sensor input	
Number of sensors	15 x VEGA HART sensors (5 x with Ex version)
Type of input (selectable)	
– Active input	Sensor power supply by VEGASCAN
– Passive input	Sensor has an own voltage supply
Measured value transmission	
– HART multidrop protocol	digital for VEGA HART sensors
Cycle time until the next measured value update	max. 5 seconds (depending on the number of connected sensors)
Fail safe relay	
Switching voltage	min. 5 V DC at 100 mA, max. 250 V AC/DC
Switching current	min. 1 mA at 24 V DC, max. 3 A AC, 1 A DC
Breaking capacity	min. 24 mW at 24 V DC/1 mA, max. 750 VA, max. 40 W DC
Ethernet interface (optional)	
Quantity	1 x, cannot be combined with RS232
Data transmission	10/100 MBit
RS232 interface (optional)	
Quantity	1 x, cannot be combined with Ethernet
Indicators	
Measured value indication	
– graphic-capable LC display (50 x 25 mm), with lighting	digital and quasianalogue indication
– Max. indicating range	-99999 ... 99999
LED displays	
– Status, operating voltage	1 x LED green
– Status fault signal	1 x LED red
– Status interface	1 x LED green
Ambient conditions	
Ambient temperature	-20 ... +60 °C (-4 ... +140 °F)
Electrical protective measures	
Protection rating	
– Instrument	IP30
– Terminal socket	IP20
Protection class	II

Adjustment

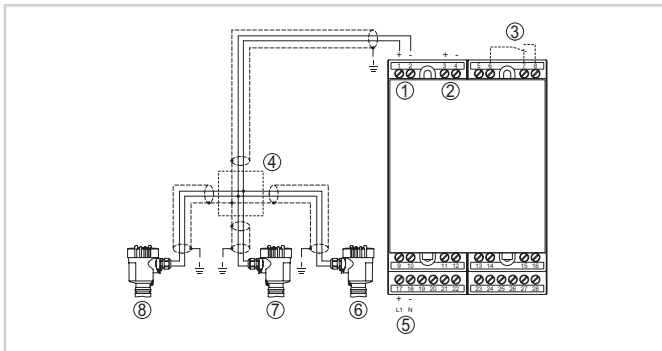
The adjustment of VEGASCAN 693 is menu-driven via four keys in the front and a clear, graphic-capable LC display with background lighting. As an alternative, parameter adjustment of the instrument is also possible via the adjustment software PACTware and the respective DTM.



Contact

You can find your personal contact person at VEGA on our homepage under "Contact".

Electrical connection

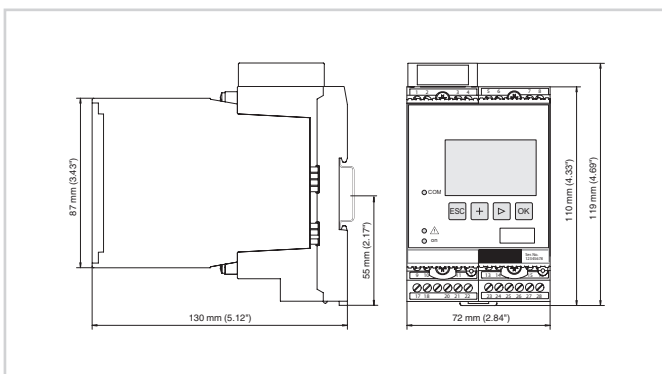


Connection example VEGASCAN 693 with two-wire sensors

- 1 Measurement data input with sensor supply (active input)
- 2 Measurement data input (passive input), not in Ex-ia
- 3 Internal fail safe relay
- 4 Distributor
- 5 Voltage supply of VEGASCAN 693
- 6 HART two-wire sensor with Multidrop address 1
- 7 HART two-wire sensor with Multidrop address 2
- 8 HART two-wire sensor with Multidrop address 3

You can find details on electrical connection in the instrument operating instructions on our homepage at www.vega.com/downloads.

Dimensions



Information

You can find further information on the VEGA product line on our homepage.