



## 8-20

## Proportional damper actuator ACT016-24



### Features

- To operate damper for air-circulation and HVAC up to 3m<sup>3</sup> (Applicable damper size to be varied by its performance)
- Proportional with 0 ~ 10VDC, 2 ~ 10 VDC, 4 ~ 20mA control signal
- safety operation with over-current circuit breaker, speed monitoring, noise filtering
- Full-operation of damper with Torque limit-switching circuit for complete closing
- Master actuator(ACT 016 ~ 24F) available with many salve actuators(ACT 016 ~ 24)
- V-clamp, one-touch case, gear-release button for easy installation

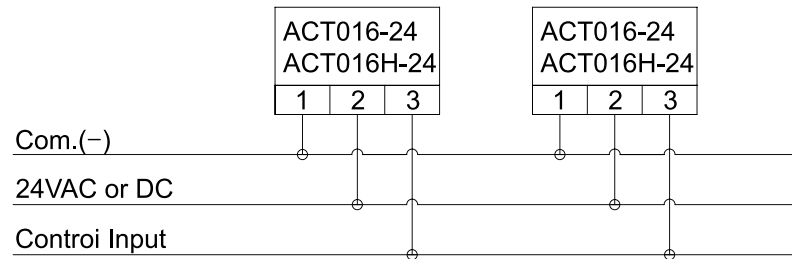
### Technical Data

			ACT016-24, ACT016-24F	ACT016H-24, ACT016H-24F
Supply voltage			24VDC±10% or 24VAC±20%, 50Hz / 60Hz	
Consumption power	Idle time		1.4VA	
	20Nm Model	Rated power	4.5VA	
		Max. power	6.0VA	
	30Nm Model	Rated power	8.0VA	
		Max. power	9.5VA	
Control type			Proportional(modulating)	
Running Torque			20Nm/standard type	30Nm/high torque type
Holding Torque			20Nm	30Nm
Running time			80~150sec/standard type	60~100sec/high torque type
Ambient Temp.			-15℃ ~ 50℃	
Input signal			0~10VDC, 2~10VDC, 4~20mA	
Feedback			"F" type : 0~10VDC	
Control accuracy			±4%	
Direction			CW/CCW(direction converting switch installed)	
Connection			Terminal block installed(AWG18~26)	
Cable Entry			PF1/2" (CTG16) x 1	
Weight, Size			1.4kg, 120mm x 190mm x 67mm (W x L x H)	

## ACT016 Series Wiring Diagram

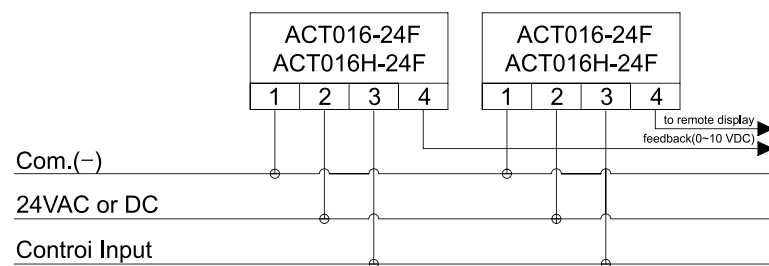
ex.1) proportional control

※ Control Y = 0~10VDC, 2~10VDC, 4~20mA



ex.2) proportional control(feedback output)

※ Control Y = 0~10VDC, 2~10VDC, 4~20mA



ACT-016 Series can be connected up to 10 pcs in parallel

## Dimensions

