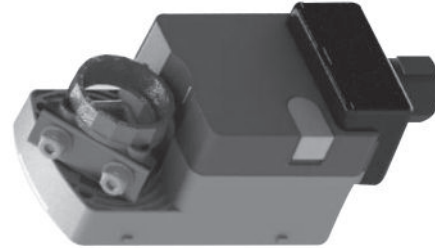




8-14

Small Valve&Damper Actuator GDA-05A / 05P



Use & Features

- GDA-05 Series, Damper actuator, to operate damper up to 0.5m² to the max.
- GDA-05 Series has 2-step(fully open or close) or 3-step(floating), proportional control.
- Free Voltage circuit board for 100~240VAC 60Hz or 100~240VDC.
- Over-current circuit breaker to protect motor damage and save the energy in idle time.
- Full-operation of damper with Torque limit-switching circuit for complete closing.
- Easy installation with V-clamp, Gear-release button.
- Terminal block and cable gland holder for easy wiring and clean finishing.
- Changeable turning direction by switch without wiring modifications.



Model Series Define & Technical Data

Model Name	Input signal	Output signal	Power supply
GDA-05A-24	ON/OFF		24VAC/VDC
GDA-05A-24S	ON/OFF	2 x SPST	24VAC/VDC
GDA-05P-24	(0~10V, 2~10V, 4~20mA)	(0~10V, 2~10V, 4~20mA)	24VAC/VDC
GDA-05A-FV	ON/OFF		100~245VAC
GDA-05A-FVS	ON/OFF	2 x SPST	100~245VAC

Supply voltage : AC/DC 24V ±10% 50/60HZ,

AC110V~220V ±10% 50/60HZ

Control Signal : ON/OFF & Floating & Propotional

Adjusting force : 5Nm

Norminal rotation angle : 90°

Direction : CW/CCW directional change possible

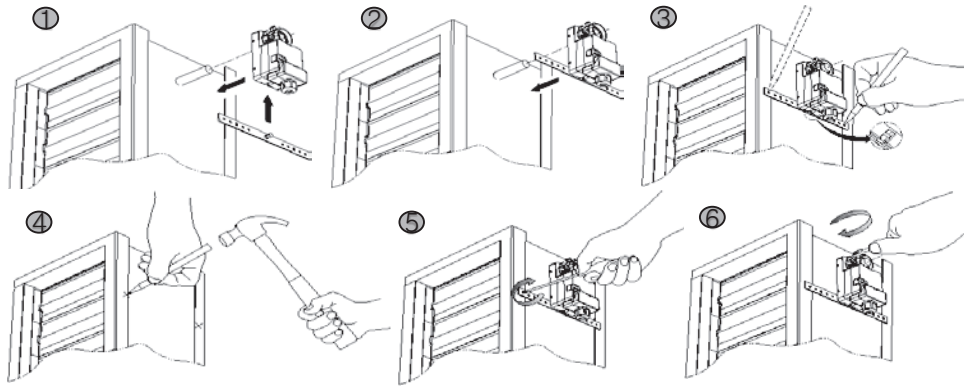
Control speed : 150sec in condition 90° & load

Temperature : Media temperature : 0°C~ +100°C

Operating : 0 ~ 50°C (5-95%RH,nonconsidering)

Storage : -20 ~ 70°C (5-95%RCHab,nleo nc-onnonnescidtoerr in: gTe) rminal Block TYPE

Mounting Note



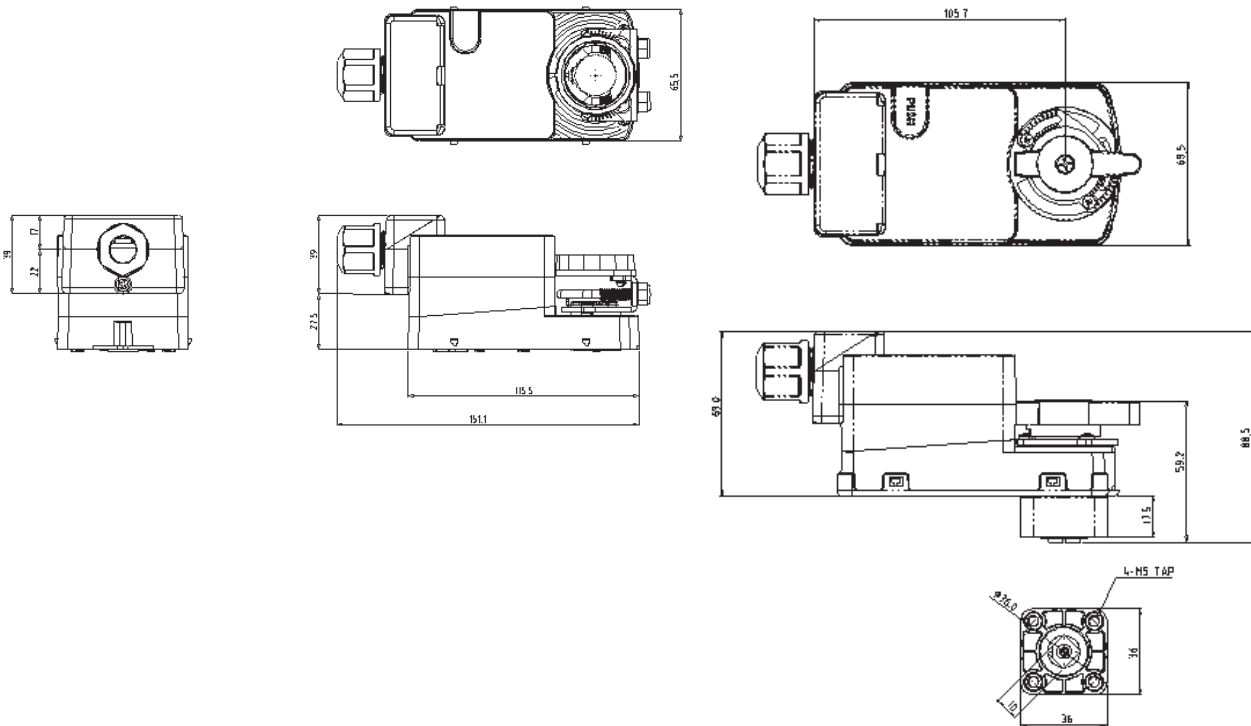
Note)

- 1) Unbalance, caused by diameter of damper axis when V-clamp is fixed, makes a slight up-down movement of damper actuator, which is called as unbalance rotation.
- 2) Bracket fixed without gap may cause over-load by mechanical restraint

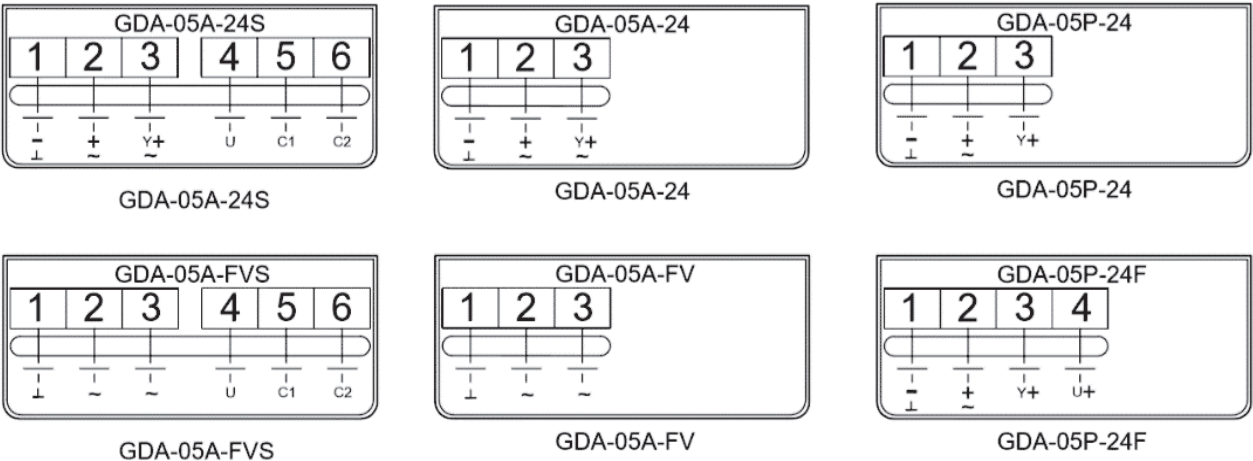


Restrictions) Don't dis-assemble, which may cause re-assembling impossible due to structural demolition.

Dimensions



Wiring Diagram



ON-OFF & FLOATING (AC/DC24V)

Series	Property	Connector
GDA-05A-24	AC/DC COM AC/DC +24V AC/DC +24V	Con # 1 Con # 2 Con # 3
GDA-05A-24S	AC/DC COM AC/DC +24V AC/DC +24V S/W COM NO(OPEN/CLOSE) NO(CLOSE/OPEN)	Con # 1 Con # 2 Con # 3 Con # 4 Con # 5 Con # 6

ON-OFF & FLOATING (AC 85~265V)

Series	Property	Connector
GDA-05A-FV	ACFV(N) ACFV(L) ACFV(L)_SIG	Con # 1 Con # 2 Con # 3
GDA-05A-FVS	ACFV (N) ACFV (L) ACFV (L)_SIG S/W COM NO(OPEN/CLOSE) NO(CLOSE/OPEN)	Con # 1 Con # 2 Con # 3 Con # 4 Con # 5 Con # 6

PROPORTIONAL (AC/DC 24V)

Series	Property	Connector
GDA-05P-24	AC/DC COM AC/DC +24V 0~10V,2~10V,4~20mA(INPUT)	Con # 1 Con # 2 Con # 3
GDA-05P-24F	AC/DC COM AC/DC +24V 0~10V,2~10V,4~20mA(INPUT) 0~10V,2~10V(OUTPUT)	Con # 1 Con # 2 Con # 3 Con # 4